

Setting Up a Pump

Setting Up a Pump

Home / Manage Devices / Site Dashboard

SITE DASHBOARD OVERVIEW

Site: Irvine Demo Site

My Devices: Tree View My Weather

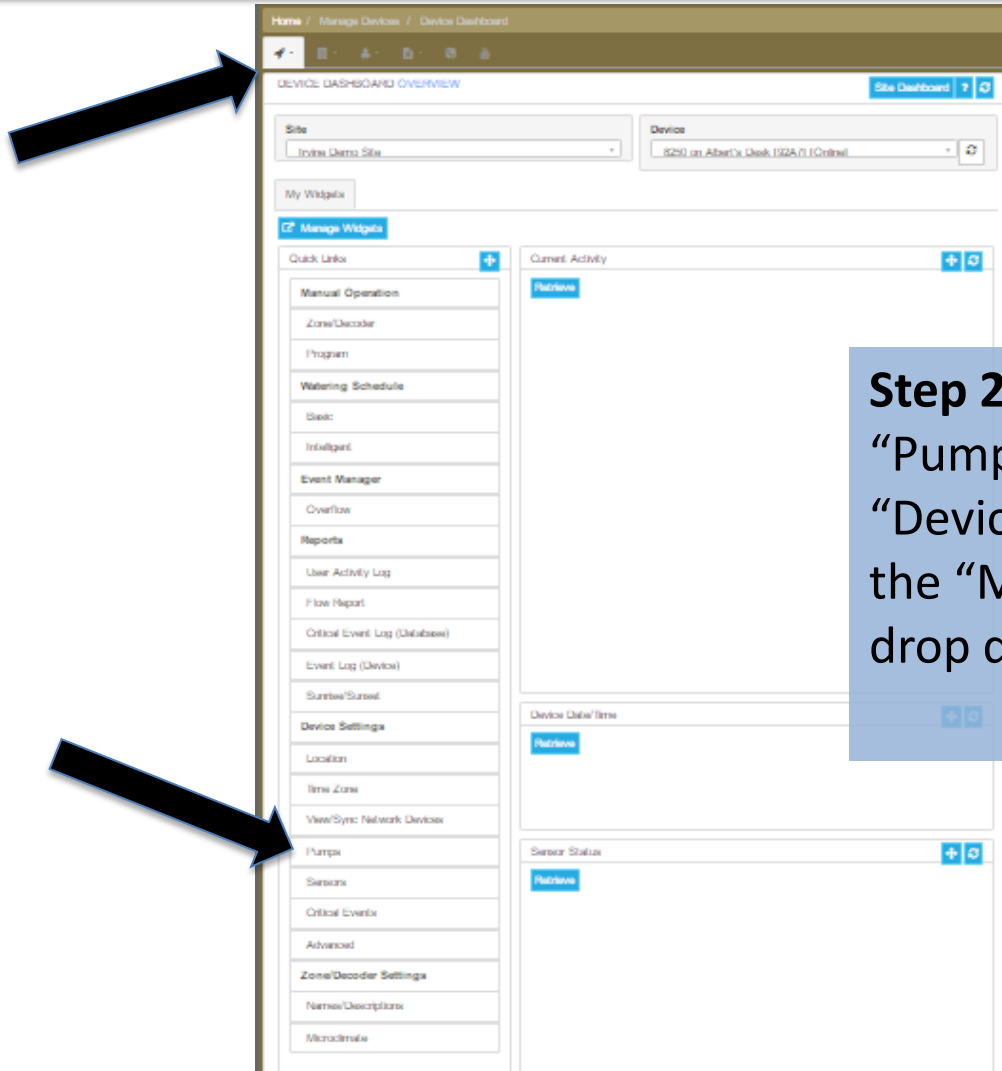
Add Device + Global ON/OFF +

Name	Status	Attributes	Shortcuts
8250 In the Lab [901B]			
+ 8250 on Albert's Desk [92A71]			
8380 WiFi on Amir's Desk [2404]			
8800 on Amir's Desk [7156]			
8700 Marbella Test Site			
+ Eric 8700VM Gateway			
+ HB Demo 2 [Albert's Desk] 8FB1			

« 1 2 3 4 5 »

Step 1: Select the controller

Setting Up a Pump



Step 2: Click on
“Pumps” under
“Device Settings” from
the “Manage Devices”
drop down menu

Setting Up a Pump

Home / Manage Devices / Device Settings

DEVICE SETTINGS OVERVIEW Site Dashboard

Site: Irvine Demo Site Device: 8250 on Albert's Desk [92A7] [Online]

Location Time Zone View/Sync Network Devices **Pumps** Sensors Critical Events Advanced

Device/Database

1) Front Yard

State: ☒ ON ☐ OFF

Prime: 00 min 05 s

2) Back Yard

State: ☒ ON ☐ OFF

Prime: 00 min 05 s

3) Trees

State: ☒ ON ☐ OFF

Prime: 00 min 05 s

Step 3: Turn on each valve that will be supplied by a pump

Enter the "Prime" period
Click "Apply"