

Pairing Your Wi-Fi Controller & Router

Pair Your Wi-Fi Controller to Your Router
Using One of Two Methods:

WPS Method

Automatic

AP Mode

Manual



Pairing Your Wi-Fi Controller & Router

WPS Method

Push a Button on Your Router,
Then Push a Button on Your Controller

WPS Method

Step 1:

Push the “WPS” button on your *router*
(The button may have an icon that looks something like one of these)



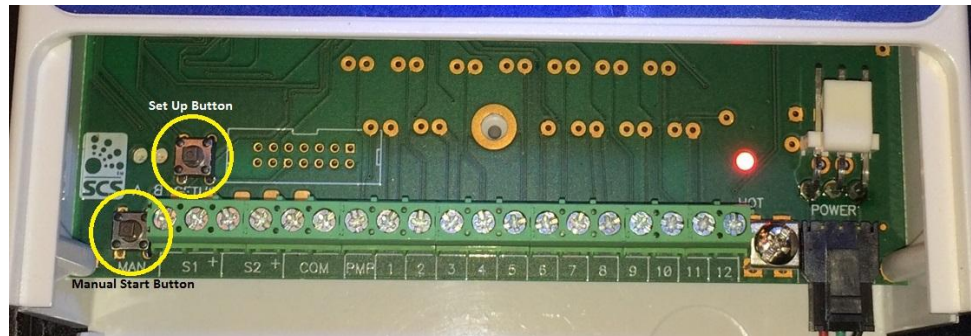
Note : The location and markings of the buttons on the router depend on the make and model. Refer to the router’s owner’s manual for instructions.



WPS Method

Step 2:

Within 1 minute of pressing the **router's** WPS button, push and hold the “Set Up” and “Manual Start” buttons on your **controller** simultaneously for approximately 5 seconds or until LED 1 remains flashing and all other LEDs are off.



Note : The location and markings of the buttons on the controller depend on the controller's model number. Refer to the owner's manual for instructions

WPS Method

Step 3:

Your controller will automatically establish connection to your router and connect to the internet. You will know the process is complete and the controller has established connection online when LED 1 is flashing and LED 2 is solid. This process should take 2 to 3 minutes.



Note : The location of LEDs is Different for Each Model. Some are Located Inside the Cabinet, Others are Located on the Outside of the Enclosure

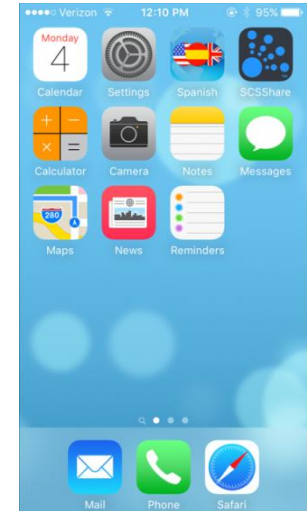
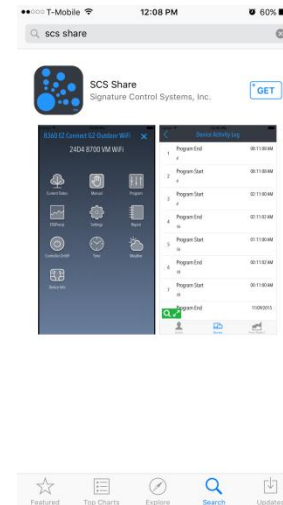
AP Mode (Manually)

Manually Enter Your Router's Password into your Controller
Using the Share™ Mobile App

AP (Mobile App) Method

What You Will Need

- SCS Mobile App downloaded onto your iPhone or Android phone
- Your Router's SSID (Name)
- Your Router's Password

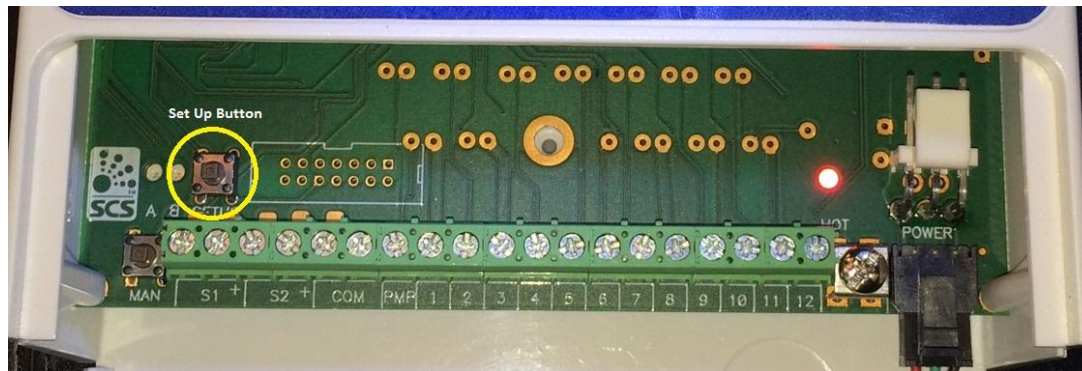


Note : The SCS Mobile App is available at the iPhone and Android stores. From the app store, search for “SCS Share” to download the app.

AP (Mobile App) Method

Step 1:

Press the “Setup” button on the controller’s circuit board for 5 seconds or until LED 1 is flashing and all other LEDs are off. Release the button then wait approximately an additional 30 seconds more until LEDs 1, 3 and 4 are flashing and 2 is off before proceeding to the next step.



Note : The location of the “Setup” button differs depending on the controller model number. Refer to the owners manual for instructions

AP (Mobile App) Method

Step 2:

Go to the “Settings” page of your mobile device.

Select “Wi-Fi” then “CHOOSE A NETWORK.”

Select your controller as the access point you want to connect to then exit out of the “Settings” page of your mobile device.



AP (Mobile App) Method

Step 3:

Open the SCS SHARE app on your mobile device. At the “log in” page you should now see “WiFi APMODE”

instead of “Log In.” Click on

“WiFi APMODE” to continue

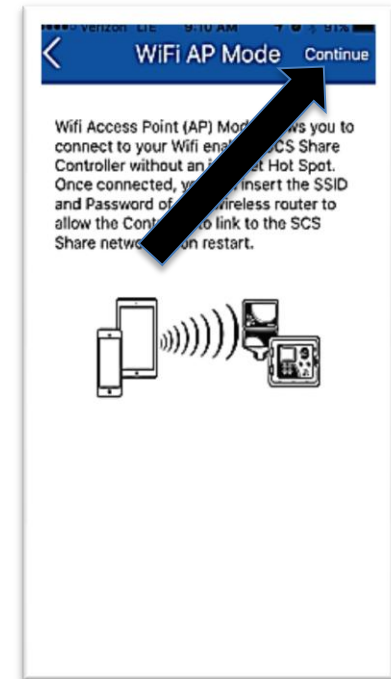


AP (Mobile App) Method

Step 4:

A welcome screen will be displayed.

Click “Continue”



AP (Mobile App) Method

Step 5:

Click on “Set WiFi”



AP (Mobile App) Method

Step 6:

Enter your router's SSID (name) and Password and select the Encryption type

Then press "Send"



The screenshot shows a mobile app interface titled "Setup Wifi". It contains three input fields: "WiFi SSID", "Password", and "Encryption Type". Below the "Encryption Type" field, there are two radio button options: "WPA/WPA2" (which is selected) and "WEP(64,128,256 bit)". At the bottom of the form is a green "Send" button. Two large black arrows are overlaid on the image: one points to the "WiFi SSID" input field, and the other points to the "Password" input field.

Note : If you do not know your SSID (Router Name) and Password, return to the previous screen and click "Read WiFi"

Pairing Your Wi-Fi Controller & Router

AP (Mobile App) Method

Step 7:

You should receive the message,

“Success
Set WiFi Successful”

Click “OK”



AP (Mobile App) Method

Step 8:

Return to your controller and press the SET UP button. Your controller's LEDs will begin indicating your controller is now paired. Once internet connection has been established, LED1 will remain flashing and LED2 will be solid. This process normally take 2 to 3 minutes.

