

S-REACH® ACCESS POINT

Access Point for Medium & Large Scale Deployments

The Signature S-Reach is an IoT access point solution, specifically designed for public or private network deployments. This highly scalable and certified IP67 (outdoor version only) solution is capable of resisting the harshest environmental factors including moisture, dust, wind, rain, snow and extreme heat, supporting applications in virtually any environment.

This flexible solution provides durable, low-power, wide area connectivity in support of M2M and IoT applications for service providers and individual enterprises wanting to expand their network coverage. Bundled for easy deployment, the outdoor solution includes a access point with an IP67 enclosure and antenna to improve outdoor range and provides a choice of cellular 4G-LTE, or Ethernet backhaul options. It can be deployed as part of an existing telecommunications tower, individual stand or wall mount.



Outdoor Access Point

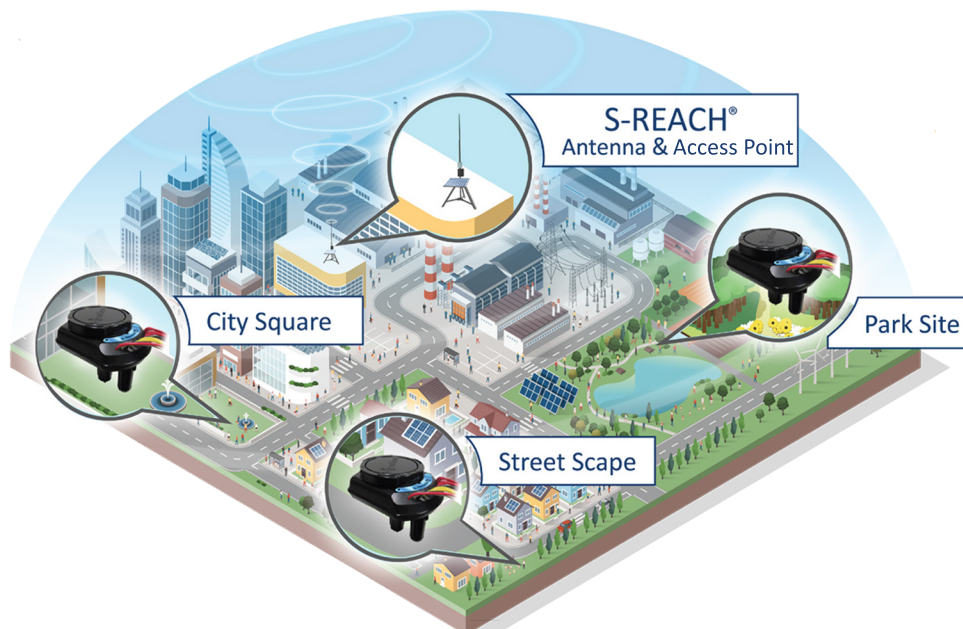


Indoor Access Point

KEY FEATURES & BENEFITS

- Greatly expands network coverage
- External antenna increases connectivity to S-REACH valve actuators
- Low-cost, high quality support for indoor/outdoor IoT applications
- ISM band scanning for optimum performance
- Listen Before Talk operating protocols
- 27 dBm support for European region
- Lightning arrestor and grounding mechanism for protection against storm damage
- Compatible with North american and Europe ISM bands

REACH SMART CITY DEPLOYMENT



ACCESS POINT SPECIFICATIONS

REGION	EUROPE	N. AMERICA
Antenna Connectors	- “N” Type RJ-45 for POE	
Physical Dimensions	10.315” x 3.582” x 10.118” (262 mm x 91 mm x 257 mm)	
POWER		
Max Transmitter Power Output (TPO)	27 dBm	26 dBm
External Antenna	3.0 dB Additional Gain	
External H5 or LTE Antenna	2.15 dB Additional Gain	
ENVIRONMENTAL		
Operating Temperature	-30° to +65° C	
Storage Temperature	-40° to +85° C	
CERTIFICATIONS		
EMC Compliance	US: FCC Part 15 Class B / EU: EN 55022 Class B, EN 55024 / Canada: ICES-003	
Radio Compliance	FCC 15.247, IC RSS-210, EU EN 300 220	
Safety	UL/cUL 60950-1 2nd Ed., UL/cUL 60950-22, IEC 60950-1 2nd Ed. + A2, IEC 60950-22, RoHS Compliant	
Actual performance speeds may be affected by attributes such as distance from gateway, data loads, packet sizes, etc.		

ORDERING INFORMATION

S-REACH Series - Wireless Valve System- U.S. Models

RCH-IN-CELL-USA S-Reach Access Point - Interior Mount - Cellular
 RCH-EX-CELL-USA S-Reach Access Point - Exterior Mount - Cellular
 RCH-IN-ETH-USA S-Reach Access Point - Interior Mount - Ethernet

S-REACH Series - Wireless Valve System- International Models

RCH-IN-CELL-ISO S-Reach Access Point - Interior Mount - Cellular
 RCH-EX-CELL-ISO S-Reach Access Point - Exterior Mount - Cellular
 RCH-IN-ETH-ISO S-Reach Access Point - Interior Mount - Ethernet

S-REACH Access Point Required to Use the S-REACH Controller

WHAT'S INCLUDED WITH YOUR OUTDOOR ACCESS POINT?

- 1 - Access Point
- 1 - mCard inserted into Access Point
- 1 - Grounding screw
- Internal cable connectors
- 1 - Lightning arrestor
- 1 - Mounting Kit (can mount to pole, wall, tower)
- 1 - IP67-rated antenna
- 2 - Cellular antennas (Note: Ethernet only does not include cellular antennas)
- External Connector Cables
- Installation guide for setting up IP67 chassis and inserting SIM card
- Installation guide for installing accessories

WHAT'S INCLUDED WITH YOUR INDOOR ACCESS POINT?

- 1 - Access Point
- 1 - mCard inserted into Access Point
- 1 - Halfwave Whip Antenna
- Internal cable connectors
- Installation guide for setting up IP67 chassis and inserting SIM card
- Installation guide for installing accessories