

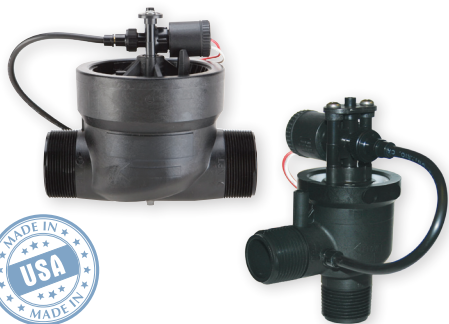
VALVES



VALVES

VALVES FAMILY

Quantum Series



- Simple proven design has few moving parts.
- Available with built in pressure regulation.
- Comes in 1" (25,4 mm) — 2" (50, 8 mm) Male BSP and NPT models.
- Easy to operate internal bleed system.
- Heavy duty glass filled Nylon construction.

9000



- Simple proven design has few moving parts.
- Available with or without flow control.
- Comes in 1" (25,4 mm) NPT, Slip or BSP versions.
- Easy to operate internal manual bleed.
- PVC construction makes gluing a snap with the slip configuration.

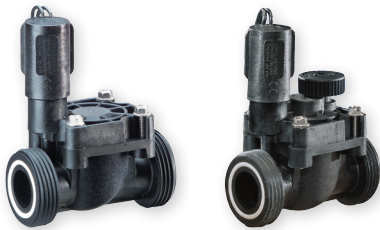
7900



- Heavy duty glass filled nylon construction.
- Simple proven design has few moving parts.
- Available with or without flow control.
- Comes in 1" (25,4 mm) NPT or BSP versions.
- Bayonet mounted bonnet for quick and easy servicing.

VALVES

9501



- 3/4" (19,05 mm) & 1" (25,4 mm) EZ connect union valve makes installation and valve replacement a snap.
- Heavy duty glass filled nylon construction.
- Available with or without flow control.
- Many 3/4" (19,05 mm) and 1" (25,4 mm) fittings available: BSP female, BSP male, Barb, Slip, NPT Female and NPT male.
- Bayonet mounted bonnet for quick and easy servicing.

9502



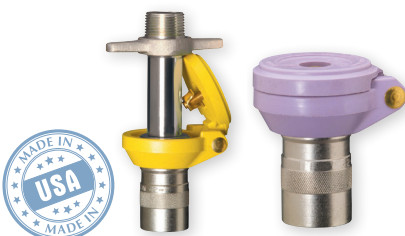
- 1 1/2" – 2" (38,1 mm – 50,8 mm) EZ connect union valve makes installation and valve replacement a snap.
- Heavy duty glass filled nylon body with a PVC bonnet.
- Many 1 1/2" (38,1 mm) and 2" (50,8 mm) fittings available: BSP female, Slip, NPT Female and Isolation valves.
- Eight stainless steel nuts grip into the bonnet to accommodate for extreme climatic fluctuations.

9515-9520



- 1 1/2" (38,1 mm) and 2" (50,8 mm) combination globe or angle valve.
- Heavy duty glass filled nylon body with a PVC bonnet.
- Eight stainless steel nuts grip into the bonnet to accommodate for extreme climatic fluctuations.
- 200 PSI (13,8 bar) rated for heavy duty applications.

1" QCV 7640



- 1" (25,4 mm) quick coupling valves with rubber covers.
- Available with locking covers.
- Reclaimed water covers.
- Featuring ACME threads for convenient flow control.

VALVES OVERVIEW

APPLICATIONS	Quantum	9000	7900	9501	9502	9515-9520
RESIDENTIAL		✓	✓	✓		
COMMERCIAL/MUNICIPAL			✓	✓	✓	✓
FLOW CONTROL		✓	✓	✓	✓	✓
W/O FLOW CONTROL	✓	✓	✓	✓		
HIGH PRESSURE	✓			✓	✓	
RECLAIMED WATER		✓	✓	✓	✓	✓
EZ CONNECT™				✓	✓	
PRESSURE REGULATED	✓					

APPLICATIONS	1" QCV 7640
COMMERCIAL	✓
ATHLETIC FIELDS	✓
SPORTS TURF	✓
RECLAIMED WATER	✓
1" INLET (25,4 MM)	✓



FOR MORE INFORMATION

SIGNATURE CONTROL SYSTEMS, INC.

WORLD HEADQUARTERS

18 Goodyear • Suite 110
Irvine • California • 92618
Tel: 949.580.3640
Fax: 949.580.3645

USA Toll Free: 866.4SIGNATURE

MANUFACTURING FACILITY

8800 N.Allen Rd.,
Peoria • Illinois • 61615
Tel: 949.580.3640
Fax: 949.580.3645

EUROPE & MIDDLE EAST

5 rue de la Vallee Yart
78640 Saint Germain de la Grange
France
Tel: +33.13.489.9056
Fax: +33.13.489.6025

REGIONAL OFFICES

ASIA
NanXian Plaza • MinZhi Street • Shenzhen,
Guangdon Province • 518131
Tel: (86) 136.00419465 • Fax: (86) 755.83275012
SOUTH AMERICA
Av Paseo Los Bravos 6000 • Lo Barnechea
Santiago • Chile
Tel/Fax: +56 229.556220

MEXICO, CENTRAL AMERICA

Ribera Escondida 118 • Riberas Del Campestre
38080 Celaya • Gto. • Mexico
Tel/Fax: +52 (461) 614.2322

AFRICA

P.O. Box 1260 • Strubensvalley 1735
Roodepoort • South Africa
Office & Mobile: +27 82 553 9093 • Fax: 086 670 6318

www.SignatureControlSystems.com

99903406