

HOSE END



HOSE END

HOSE END FAMILY

HOT SHOT™



Hot Shot™ with Regulator Multi Pattern Nozzle

If you could only have one nozzle, this would be it. This heavy duty Hot Shot™ sprays hot spots, jet cleans equipment and soaks even the most delicate plant material. The Hot Shot™ is available with a lavender nozzle for use in non-potable applications. The hot shot is available in both ¾" and 1" hose threads.

- Available in both ¾" and 1" hose thread sizes
- The multi-pattern nozzle is great for jet cleaning equipment to soaking delicate plant material
- Heavy duty aluminum construction
- Lavender nozzles available for non-potable water applications

COOL SHOT™



Cool Shot™ and Cool Shot™ Plus Shower Head Nozzles

The Cool Shot™ families of nozzles are available in three varieties, the standard Cool Shot™, the Cool Shot™ Plus, and the Cool Shot™ Plus Economy. The Cool Shot's™ shower pattern is perfect for soaking or heavy watering of all types of plant material. The Cool Shot™ Plus with regulator includes on – off flow control and the Cool Shot™ Plus Economy gives you all the same great features while taking advantage of the cost saving plastic construction. All Cool Shot™ nozzles are available in both ¾" and 1" sizes. All Cool Shot™ nozzles can be ordered with the lavender non-potable water nozzles preinstalled.

- Available in both ¾" and 1" hose thread sizes
- Provides heavy shower for soaking or heavy irrigating
- Cool Shot Plus includes regulator with on – off control
- Heavy duty aluminum or plastic version available
- Lavender nozzles available for non-potable water applications

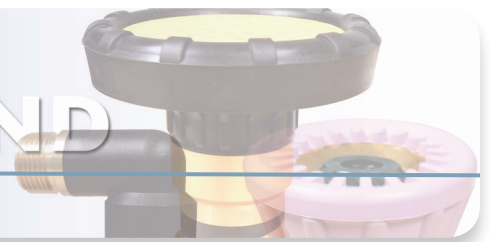
FAN SHOT™



The Fan Shot is a slotted fan spray nozzle designed for various flows both with and without regulators. The Fan Shot is available in ¾" and 1" models. All of the color coded nozzles can be purchased on regulated or non-regulated bodies, individually or in a combo kit. Blue = 30 gpm, Red = 20 gpm, Yellow = 10 gpm.

- Available in both ¾" and 1" hose thread sizes
- Fan Shot Plus includes regulator with on – off control
- Economical High impact plastic construction
- Multiple nozzles available for various pressures

HOSE END



Wetting Agent Applicator



Apply your costly wetting agents or fertilizers evenly and efficiently. This on-off, variable flow control unit connects easily to the beginning or end of your $\frac{3}{4}$ " and 1" hose. It's also available with a factory installed Cool Shot Nozzle.

- Perfect for applying wetting agents or fertilizers
- Available in both $\frac{3}{4}$ " and 1" hose thread sizes
- Can be installed at the beginning or end of your hose
- Available with the Cool Shot nozzle
- Economical High impact plastic construction

HOSE HEAD™



The Hose Head adaptor is a quick and easy way to convert a standard Rotor into a 360° swiveling hose bib. The Hose Head adapter will allow you to connect a standard 1" or $\frac{3}{4}$ " hose to many Rain Bird, Hunter, Toro and John Deere rotors. Simply remove the internal assembly, install the Hose Head and you're set. Each Hose head comes with both $\frac{3}{4}$ " and 1" fittings. The Hose Head will work with: Rain Bird Eagle 700 900 series, Hunter G60 G70 G90 G800 series, Toro 630 650 660 680 730 750 760 780 830 850 860 880 series, Signature® D50 D55 D70 D75 series and Signature® 280 series.

- Turns many sprinkler heads into a hose bib with a 360° swivel
- Includes both $\frac{3}{4}$ " and 1" hose thread fittings
- Adapts from Hunter G60, G70 & G90
- Adapts from Rain Bird Eagle 700 & 900 series
- Adapts from Toro 630, 680, 750, 780, 850, & 880 series
- Adapts from Signature® D50 & D70 series
- Adapts from Signature® 280 Series

HOSE END OVERVIEW

APPLICATIONS	HOT SHOT™	COOL SHOT™	FAN SHOT™	WETTING AGENT™	THE GUZZLER™	HOSE HEAD™
TURF GRASS	✓	✓	✓	✓	✓	✓
ORNAMENTALS	✓	✓	✓	✓	✓	✓
GROUND COVER	✓	✓	✓	✓	✓	✓
RESIDENTIAL	✓	✓	✓	✓	✓	✓
RECLAIMED WATER	✓	✓	✓	✓	✓	✓
COMMERCIAL/MUNICIPAL	✓	✓	✓	✓	✓	✓

HOSE END



FOR MORE INFORMATION

SIGNATURE CONTROL SYSTEMS, INC.

www.SignatureControlSystems.com

WORLD HEADQUARTERS

16485 Laguna Canyon Rd., Suite 130,
Irvine • California • 92618
Tel: 949.580.3640 • Fax: 949.580.3645

MANUFACTURING FACILITY

8800 N. Allen Rd., • Peoria • Illinois • 61615
Tel: 949.580.3640 • Fax: 949.580.3645

EUROPE & MIDDLE EAST

5 rue de la Vallée Yart
78640 Saint Germain de la Grange • France
Tel: +33.13.489.9056 • Fax: +33.13.489.6025

USA TOLL FREE:

8 6 6 . 4 S I G N A T U R E

REGIONAL OFFICES

ASIA Shenzhen • Guangdong Province • 518131 • Tel: (86) 136.00419465 • Fax: (86) 755.83275012

AFRICA Roodepoort • South Africa - Office & Mobile: +27 82 553 9093 • Fax: 086 670 6318

AUSTRALIA Glen Osmond 5064 • South Australia • Tel: +61 (0) 417 862 269 • Fax: +61 (0) 8 8338 2021

MEXICO, CENTRAL AMERICA Guanajuato • Mexico • Tel/Fax: +52 (461) 614.2322

SOUTH AMERICA Santiago • Chile • Tel/Fax: +56 229.556220

www.SignatureControlSystems.com

99903407