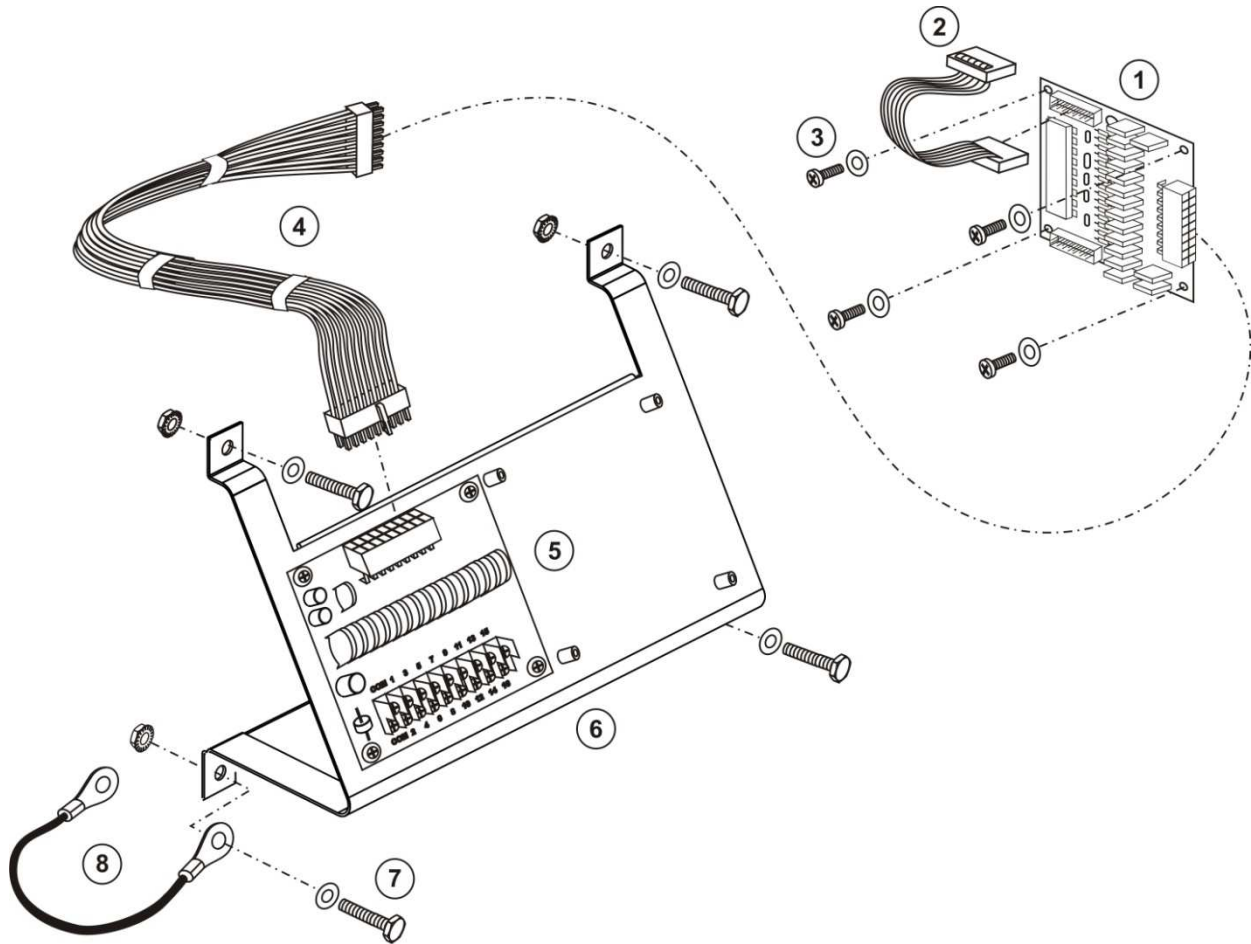


AC116EXP

Component Parts/Packing List

C-Style Expansion Kit, Standard Surge

Includes Valve Module ACVLV216 [Front Module] with Wiring Harness, Valve Terminal Module ACTRM116 [Back Module] PLUS Mounting Kit ACRMBRKT



Ref.	Part No.	Description	Qty
	AC116EXP	C-Style Expansion Kit, Standard Surge	1
1	ACVLV216	Valve Module, C-Series, 16 Zone, Large Terminal, No Surge [Front Module]	1
2	ARCBL1.5	Cable, Valve Module Bus, 1.5 in (38.1mm)	1
3		Screws and Washers	4
4	ACTWH25	Wiring Harness, C-Series, 25 in (635 mm)	1
5	ACTRM016	Valve Terminal Module, C-Series, 16 Zone, Large Terminal, Standard Surge [Back Module]	1
6	ACRMBRKT	Mounting Bracket	1
7		Mounting Bracket Mounting Kit (bolts, washers & locknuts)	4
8		Ground Wire	1

AC116EXP

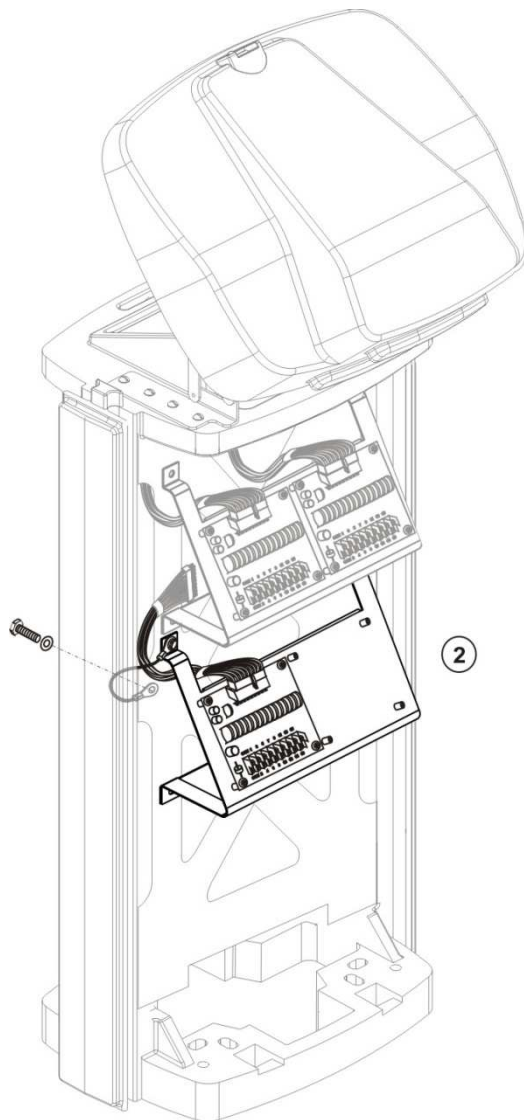
Final Installation

C-Style Expansion Kit, Standard Surge

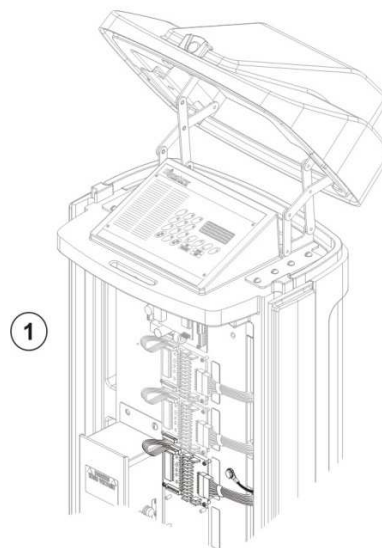
Includes Valve Module ACVLV216 [Front Module] with Wiring Harness, Valve Terminal Module ACTRM116 [Back Module] PLUS Mounting Kit ACRMBRKT

Final Install of Expansion Kit

1. Install on front of Pedestal Chassis: Mount Valve Terminal Module (1), use four small bolts & washers (3). Plug in Cable Valve Module Bus (2) to top Connector; connect other end to upper Valve Terminal Modules. (See Front View)
2. Install on back of Pedestal Chassis:
Mount the Valve Terminal Module Bracket Assembly (5/6), use four large bolts, washers and lock nuts (7). (See Back View)
3. Assemble one end of the Green Ground Wire (8) on a Bracket bolt hole using the bracket's Bolt and Locknut (7). (See Back View) Attach the other end to the Chassis on front with bolt and Locknut provided.
4. Connect Harness (4) to top connector of the Valve Terminal Module (5) and guide the other end through Chassis and connect to the side of the front Valve Terminal Module (1). (See Front View)



Back View



Front View