



EYES TO THE GROUND. MINDS TO THE HORIZON.™

SIGNATURE SHARE™

www.SignatureControlSystems.com

© 2015-2016 Signature Control Systems, Inc.
All Rights Reserved.

All trademarks, slogans, icons, logos are the property of Signature Control Systems, Inc. or their respective owners, and are used under permission.

Signature Control Systems, Inc. shall not be liable for technical or editorial errors or omissions contained herein; nor for incidental or consequential damages resulting from furnishing this material, or the performance or use of this product.

Signature Control Systems, Inc. reserves the right to change product specifications and performance data without notice. Information in this document may change without notice. Refer to www.SignatureControlSystems.com for the latest product information.

No part of this document may be copied, reproduced, or transmitted by any means, for any purpose without prior written permission from Signature Control Systems, Inc.

Part No./Rev.: 99903468
Revision No.: RV2
Date: November 2015



WATER RESPONSIBLY

With Signature® Control Systems 4

ANYWHERE ACCESS

With SIGNATURE **SHARE™** 5

SCS SHARE™ CONTROLLER COMPARISON CHART 6-7

EZ CONNECT™ SERIES 8

EZ Connect™ 8250 Indoor Controller 9

EZ Connect™ 8255 DC Output Controller 10

EZ Connect™ 8260 Indoor Controller 11

EZ PRO™ SERIES 12

EZ Pro™ Jr. 8360 Outdoor Controller 13

EZ Pro™ 8600 Outdoor Controller 14

EZ Pro™ 8700 Outdoor Controller 15

EZ Pro™ 8700D Outdoor Two-Wire Decoder Controller 16

EZ Pro™ 8700VM Enclosure Mount Outdoor Controller 17

EZ Pro™ 8755DC 12-Volt DC Outdoor Controller 18

EZ Pro™ 8800 Outdoor Controller 19

GALAXY-RT™ SERIES 20

Galaxy-RT™ Wall Mount Outdoor Controller 21

Galaxy-RT™ Pedestal Outdoor Controller 22

EXSILIO™ SERIES 23

8905 Single Station Access Point Field Actuator 24

8920 Access Point 25

8930 Field Actuator with Integrated Access Point 26

8940 Field Repeater with Integrated Access Point 27

8945 Pole Mounted Field Repeater with Integrated Access Point 28

8950 Sensor Gateway with Integrated Access Point 29

VALVE OUTPUT MODULES / TWO-WIRE DECODERS 30

ACCESSORIES 31

FLOW SENSOR

PVC T-Mount Flow Sensor 32-33

WATER RESPONSIBLY WITH SIGNATURE® CONTROL SYSTEMS

As an industry leader in intelligent controllers, we understand that everyone's irrigation needs differ. And that's exactly why we design each of our products to deliver unmatched flexibility, ease-of-use, and power. Whether watering golf courses or commercial or residential properties, you will have access to the same revolutionary, water-saving technology; technology that aims to give you seamless control over your irrigation systems.

This unprecedented control is best illustrated with our SIGNATURE **SHARE™** platform — a cloud-based operating system that provides the ability to remotely access any of our web-based controllers from anywhere in the world via smartphone (iOS® or Android™) or other Internet-enabled devices. Additionally, our EPA WaterSense® approved, Intelligent Watering Software helps fine-tune your system by precisely irrigating each microclimate, programming all agronomical attributes of the irrigated landscape, and transmitting ET data to the controller daily.

Everything we do — all our products, software, and services — revolve around saving you water, time, and money.



ANYWHERE ACCESS

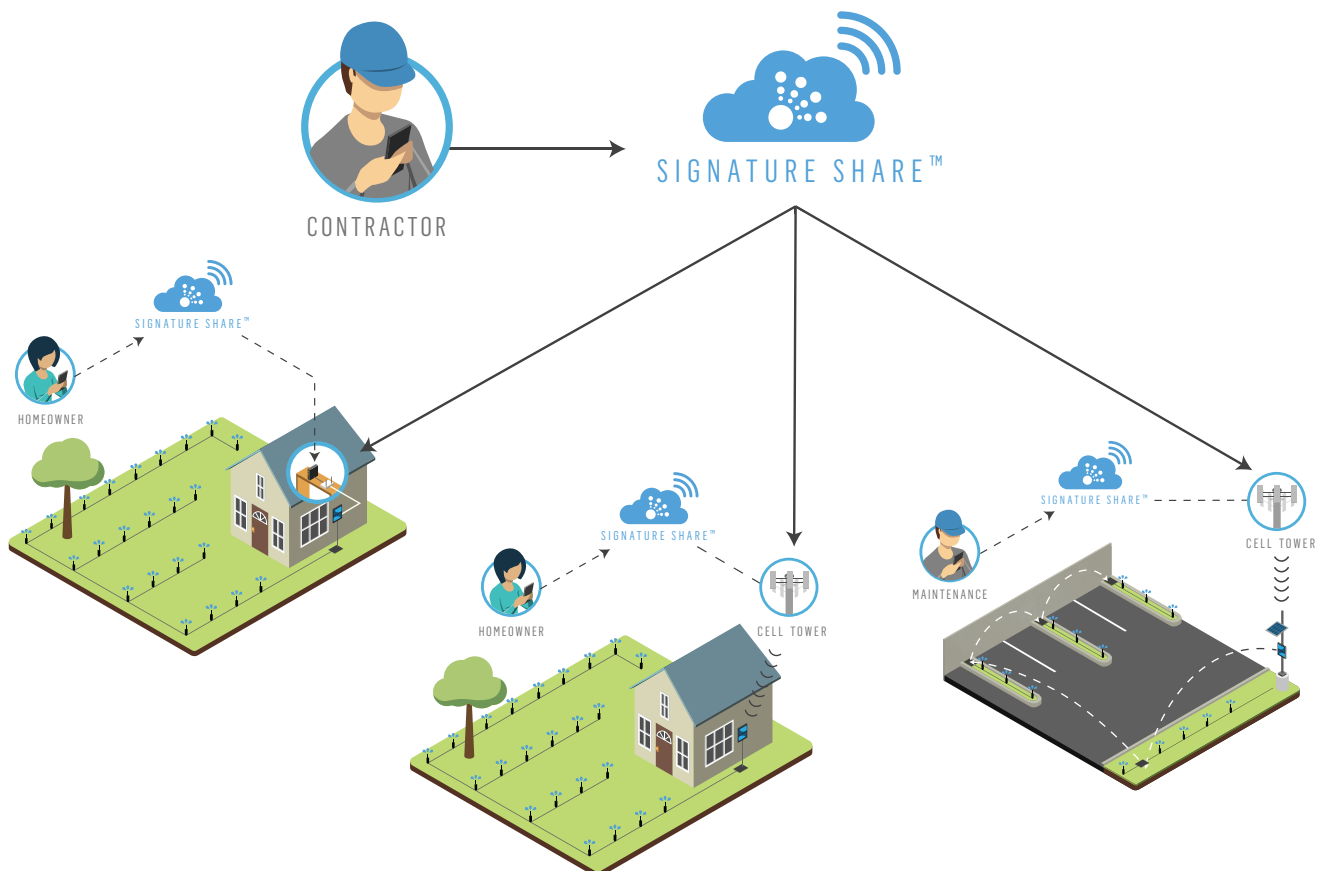
WITH SIGNATURE SHARE™

Apps have altered the way in which we communicate. In fact, they have fundamentally changed the way we do business. From basic communication to automation, speed, efficiency, and simplicity have become the core drivers — three qualities we wanted to bring to the irrigation industry. As a result, we created the SIGNATURE **SHARE**™ app. Whether you install one or a thousand controllers, this simple application lets you manage them all from anywhere in the world via your smartphone (iOS or Android) or any other Internet-enabled device.

Specifically, the SIGNATURE **SHARE**™ app provides you with a homepage that can contain all of the controllers you have registered. With the app, your smartphone, tablet or computer take the place of the dials, buttons, and screens you're used to, and give you complete access to each controller.

But the key differentiator that separates SIGNATURE **SHARE**™ from the competition is its multi-level hierarchy with username and password-protected access. Through this, a contractor can monitor or control every system they have installed directly from a smartphone with a single username and password, while the homeowner only has access to their own system.

So, whether you install residential controllers or commercial control systems, SIGNATURE **SHARE**™ lets you monitor it all.



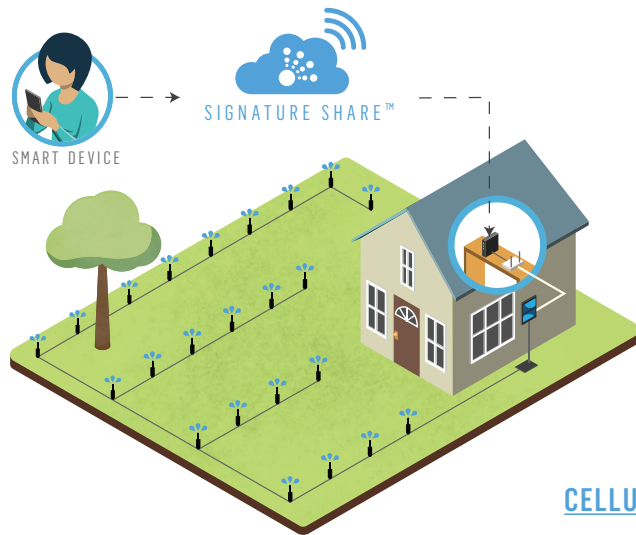
SCS SHARE™ CONTROLLER COMPARISON CHART

| | 8250 | 8260 | 8255 | 8360 | 8600 | 8700 | 8700D | 8755 | 8800 | GALAXY RT Wall Mount | GALAXY RT Pedestal |
|---|------|------|------|------|------|------|-------|------|------|-------------------------|-----------------------|
| PRIMARY APPLICATION | | | | | | | | | | | |
| Residential | ✓ | ✓ | ✓ | ✓ | ✓ | ✓ | ✓ | ✓ | ✓ | | |
| Light Commercial | | ✓ | ✓ | ✓ | ✓ | ✓ | ✓ | ✓ | ✓ | ✓ | ✓ |
| Commercial / Industrial | | ✓ | ✓ | ✓ | ✓ | ✓ | ✓ | ✓ | ✓ | ✓ | Yes |
| INTERNET CONNECTION OPTIONS | | | | | | | | | | | |
| Ethernet Port | ✓ | | | | | | | | | | |
| Wi-Fi | | ✓ | ✓ | ✓ | ✓ | ✓ | ✓ | ✓ | ✓ | ✓ | ✓ |
| Cellular | | ✓ | ✓ | ✓ | ✓ | ✓ | ✓ | ✓ | ✓ | ✓ | ✓ |
| Wireless Gateway | | ✓ | ✓ | ✓ | ✓ | ✓ | ✓ | ✓ | ✓ | ✓ | ✓ |
| SECONDARY COMMUNICATION OPTIONS OPTION | | | | | | | | | | | |
| Integrated Short Haul Data Radio [2.4GHz] | | ✓ | ✓ | ✓ | | ✓ | ✓ | ✓ | ✓ | ✓ | ✓ |
| PROGRAM OPTIONS | | | | | | | | | | | |
| Basic Watering | ✓ | ✓ | ✓ | ✓ | ✓ | ✓ | ✓ | ✓ | ✓ | ✓ | ✓ |
| Intelligent Watering Optional | ✓ | ✓ | ✓ | ✓ | ✓ | ✓ | ✓ | ✓ | ✓ | ✓ | ✓ |
| ET Downloads (Included with Intelligent Watering) | ✓ | ✓ | ✓ | ✓ | ✓ | ✓ | ✓ | ✓ | ✓ | ✓ | ✓ |
| EPA Water Sense Approved With Intelligent Watering | ✓ | ✓ | ✓ | ✓ | ✓ | ✓ | ✓ | ✓ | ✓ | ✓ | ✓ |

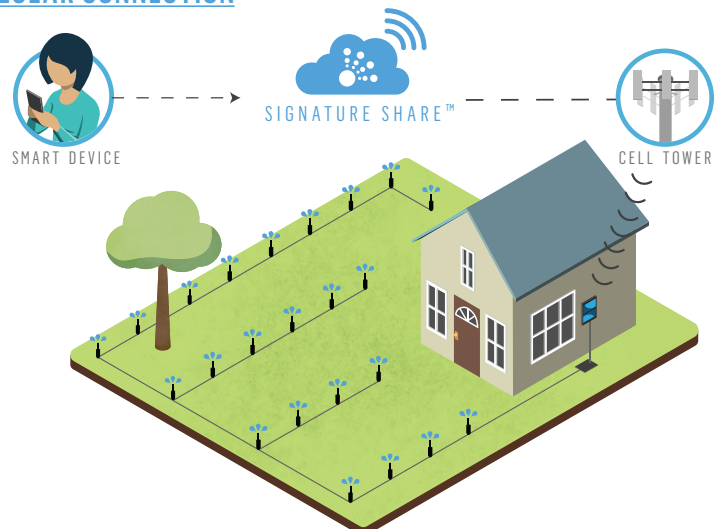
| | | | | | | | | | | | |
|---|--------------|--------------|--------------|--------------|-------------|--------------|--------------|--------------|--------------|--------------|--------------|
| FEATURES | | | | | | | | | | | |
| Indoor Enclosure | ✓ | ✓ | ✓ | | | | | | | | |
| Outdoor Enclosure | | | | ✓ | ✓ | ✓ | ✓ | ✓ | ✓ | ✓ | ✓ |
| Station Count (Up To) | 12 | 12 | 6 | 12 | 24 | 12 | 125 | 12 | 24 | 48 | 96 |
| Power Input | 110/230 | 110/230 | 110/230 | 110/230 | 110/230 | 110/230 | 110/230 | 110/230 | 110/230 | 110/230 | 110/230 |
| Power Output | 24VAC, 0.5A | 24VAC, 0.5A | 12VDC | 24VAC, 1A | 24VAC, 1A | 24VAC, 1A | 24VAC, 3A | 12VDC | 24VAC, 1A | 24VAC, 3A | 24VAC, 3A |
| Solar Power Option | | | ✓ | | | | | ✓ | | | |
| Decoder Control | | | | | | | ✓ | | | ✓ | ✓ |
| Flow Sensing | ✓ | ✓ | ✓ | ✓ | | ✓ | ✓ | ✓ | ✓ | ✓ | ✓ |
| Integrated Sensor Ports | 2 | 2 | 2 | 2 | 1 (Rain) | 2 | 2 | 2 | 1 | 0 | 0 |
| Smart Sensor Network Module | ✓ | | | | | | | | | | |
| Smart Sensor Network Module [Integrated] | | | ✓ | | | | ✓ | ✓ | ✓ | ✓ | ✓ |
| Master Valve / Pump Starts | 1 | 1 | 1 | 1 | 1 | 1 | 1 | 4 (pgm zone) | 1 | 4 (pgm zone) | 4 (pgm zone) |
| Programs (Up to) | 20 | 16 | 16 | 16 | 16 | 16 | 16 | 16 | 16 | 16 | 16 |
| Station Timing (Up To) | 12 hr 00 min | 17 hr 59 min | 17 hr 59 min | 17 hr 59 min | 9 hr 59 min | 17 hr 59 min | 17 hr 59 min | 17 hr 59 min | 17 hr 59 min | 17 hr 59 min | 17 hr 59 min |
| Events Per Program | 24 | 64 | 64 | 64 | 48 | 64 | 64 | 64 | 64 | 64 | 64 |
| Number of Starts Per Program (Up To) | 4 | 4 | 4 | 4 | 4 | 4 | 4 | 4 | 4 | 4 | 4 |
| Manual On/Off | ✓ | ✓ | ✓ | ✓ | ✓ | ✓ | ✓ | ✓ | ✓ | ✓ | ✓ |
| Diagnostics | ✓ | ✓ | ✓ | ✓ | ✓ | ✓ | ✓ | ✓ | ✓ | ✓ | ✓ |
| Surge Protection | ✓ | ✓ | ✓ | ✓ | ✓ | ✓ | ✓ | ✓ | ✓ | ✓ | ✓ |

| | 8250 | 8260 | 8255 | 8360 | 8600 | 8700 | 8700D | 8755 | 8800 | GALAXY RT Wall Mount | GALAXY RT Pedestal |
|--------------------------------------|--------------|--------------|--------------|--------------|-------------|--------------|--------------|--------------|--------------|-------------------------|-----------------------|
| SCHEDULING OPTIONS | | | | | | | | | | | |
| Odd/Even | ✓ | ✓ | ✓ | ✓ | ✓ | ✓ | ✓ | ✓ | ✓ | ✓ | ✓ |
| Interval (Days) | 1-99 | 1-99 | 1-99 | 1-99 | 1-99 | 1-99 | 1-99 | 1-99 | 1-99 | 1-99 | 1-99 |
| 12 Month Calendar | ✓ | ✓ | ✓ | ✓ | ✓ | ✓ | ✓ | ✓ | ✓ | ✓ | ✓ |
| Weekday | 4 wks | 4 wks | 4 wks | 4 wks | 4 wks | 4 wks | 4 wks | 4 wks | 4 wks | 4 wks | 4 wks |
| Water Budgeting by Month | 0 to 999% | 0 to 999% | 0 to 999% | 0 to 999% | 0 to 999% | 0 to 999% | 0 to 999% | 0 to 999% | 0 to 999% | 0 to 999% | 0 to 999% |
| Stacking Start Times | ✓ | ✓ | ✓ | ✓ | ✓ | ✓ | ✓ | ✓ | ✓ | ✓ | ✓ |
| Rain Delay | ✓ | ✓ | ✓ | ✓ | ✓ | ✓ | ✓ | ✓ | ✓ | ✓ | ✓ |
| Delay Between Stations (Up To) | 12 hr 00 min | 17 hr 59 min | 17 hr 59 min | 17 hr 59 min | 9 hr 59 min | 17 hr 59 min | 17 hr 59 min | 17 hr 59 min | 17 hr 59 min | 17 hr 59 min | 17 hr 59 min |
| Simultaneous Multi-Station Operation | 2 | 2 | 6 | 1 | 1 | 2 | 15 | 12 | 2 | 15 | 15 |
| Cycle & Soak | ✓ | ✓ | ✓ | ✓ | ✓ | ✓ | ✓ | ✓ | ✓ | ✓ | ✓ |
| Overlapping Programs | ✓ | ✓ | ✓ | ✓ | ✓ | ✓ | ✓ | ✓ | ✓ | ✓ | ✓ |

ETHERNET CONNECTION



CELLULAR CONNECTION



EZ CONNECT™ SERIES

MODEL: 8250, 8255, 8260

The EZ Connect™ series is designed to provide flexibility, ease-of-use, and power. This series can either be built with a Wi-Fi or cellular data modem and contains powerful diagnostic, flow monitoring, solenoid fault detection and email notification capabilities. When equipped with the optional Intelligent Watering Software, approved by WaterSense®, this series of controllers can fine-tune your irrigation system and precisely irrigate each microclimate individually by programming all agronomical attributes of the irrigated landscape, thereby saving you water, time, and money. Pair that with the ability to remotely access the controller from anywhere in the world using the SIGNATURE **SHARE™** app (iOS® or Android™), and you can see why this series offers you the smart way to water.

SERIES FEATURES

- Two sensor inputs (moisture; flow; temperature; rain; wind)
- Optional RF radio for wireless connection to remote access point field actuators (available for 8255 & 8260 models)
- One master valve/pump start
- Flexible programming:
 - Stackable start times (four start times per program)
 - 12 independent programs (8250 model); 16 independent programs (8260 model)
 - 24 events per program
- True calendar clock (Leap-year compatible)
- Three watering schedule options: 12-month calendar; odd/even; interval (1 to 31 days)
- Zone run time options:
 - One minute to 11 hours 59 minutes (8250 model)
 - One minute to 17 hours 59 minutes (8255 & 8260 models)
- Cycle test; manual test with manual advance
- Non-volatile memory stores programs without AC power or batteries
- Two AA batteries (not included) keep correct time for one year
- Input and output surge protection
- 1.0 amp self-resetting polyswitch for short circuit zone protection
- Rain Delay, Pump Delay, Cycle, and Soak features
- Manual On and Off
- Programmable incident notifications via email
- EPA WaterSense approved



8250 INDOOR CONTROLLER

The EZ Connect™ 8250 controller is equipped with an integrated 10Mbit ethernet port, so you can directly connect it to an existing local area network (LAN or WLAN) via a direct wire connection, powerline adapter or Wi-Fi bridge.

FEATURES

- 4-to-12 station indoor controller
- Includes 5-year data package from date of connection to SIGNATURE **SHARE™** system
- On-board ethernet port for wired connection, or compatible with third-party Wi-Fi or powerline adapters
- No complex keypad or display
- Access and monitor sites remotely from any smart or Internet-enabled device, anywhere in the world
- Two expansion ports for future enhancements
- Downloaded programs are stored in the controller and available 24/7 on Signature's secure server

HOW TO ORDER

| Model | Zones | Program | Network Communication Device | ISO Country Codes |
|-------|-------|---------|------------------------------|-------------------|
| 8250 | 04 | B | 2 | USA |
| | 06 | I | 8 | FRA |
| | 08 | | 9 | ESP |
| | 10 | | | |
| | 12 | | | |



POWERLINE ADAPTER



WI-FI BRIDGE



EXAMPLE: 8250-04-B2-USA

MODEL: 8250

ZONES: 4 zones = 04; 6 zones = 06; 8 zones = 08; 10 zones = 10; 12 zones = 12

PROGRAM: Basic = B; Intelligent Watering = I

NETWORK COMMUNICATION DEVICE: Ethernet Port = 2; Powerline Adapter = 8; Wi-Fi Bridge Adapter = 9

ISO COUNTRY CODE (COUNTRY WHERE CONTROLLER IS TO BE OPERATED):

United States = USA; France = FRA; Spain = ESP, etc.

SPECIFICATIONS

DIMENSIONS (H X W X D)

Cabinet:

7" (17,8 cm) x 5 5/8" (14,3 cm) x 2" (5,1 cm)

Enclosure Material: Plastic

Enclosure Type: Indoor

ELECTRICAL SPECIFICATIONS

USA & Canada

INPUT: 120V AC, 60 hz

OUTPUT: 24V AC, .83 Amp

International

INPUT: 230V AC, 50 hz

OUTPUT: 24V AC, .83 Amp

CERTIFICATIONS:



Part 15 Class B compliant,



8255 DC OUTPUT CONTROLLER

The EZ Connect™ 8255 DC output controller provides a unique approach to special situations. This controller provides a 12-volt DC output to actuate latching solenoids, while also having the ability to connect to an existing local area network (LAN or WLAN) via a built-in wireless modem or when equipped with the optional cellular data modem that connects directly to the Internet.

FEATURES

- 6-station, 12V DC output indoor controller
- Includes 5-year data package from date of connection to SIGNATURE **SHARE™** system
- Network connection options
 - Ethernet port
 - Cellular modem (GSM or CDMA)
 - Integrated wireless
 - Optional remote communication with RF modem
- Optional with solar power
- No complex keypad or display
- Access and monitor sites remotely from any smart or Internet-enabled device, anywhere in the world
- Two expansion ports for enhancements
- Downloaded programs are stored in the controller and available 24/7 on Signature's secure server

HOW TO ORDER

| Model | Zones | Program | Network Communication Device | ISO Country Codes |
|-------|-------|---------|------------------------------|-------------------|
| 8255 | 06 | B | 1 | USA |
| | | I | 2 | FRA |
| | | | 3 | ESP |
| | | | 4 | |
| | | | 5 | |
| | | | 6 | |
| | | | 7 | |
| | | | 8 | |
| | | | 9 | |



EXAMPLE: 8255-06-B1-USA

MODEL: 8255

ZONES: 6 zones = 06

PROGRAM: Basic = B; Intelligent Watering = I

NETWORK COMMUNICATION DEVICE: Ethernet Port with RF = 1; Ethernet Port = 2; Wireless = 3; GSM = 4; CDMA = 5; GSM with RF = 6; CDMA with RF = 7; Wi-Fi = 9

ISO COUNTRY CODE (COUNTRY WHERE CONTROLLER IS TO BE OPERATED):

United States = USA; France = FRA; Spain = ESP, etc.

SPECIFICATIONS

DIMENSIONS (H X W X D)

Cabinet:

7" (17,8 cm) x 5 5/8" (14,3 cm) x 2" (5,1 cm)

Enclosure Material: Plastic

Enclosure Type: Indoor

ELECTRICAL SPECIFICATIONS

USA & Canada

INPUT: 120V AC, 60 hz

OUTPUT: 24V AC, .83 Amp

International

INPUT: 230V AC, 50 hz

OUTPUT: 24V AC, .83 Amp

CERTIFICATIONS:



Part 15 Class B compliant,



8260 INDOOR CONTROLLER

The EZ Connect™ 8260 indoor controller is equipped with your choice of an integrated Wi-Fi modem for connection to an existing local area network (LAN or WLAN) or cellular data modem for direct connection to the Internet.

FEATURES

- 4-to-12 station indoor controller
- Includes 5-year data package from date of connection to SIGNATURE **SHARE™** system
- Network connection options
 - Ethernet port
 - Cellular modem (GSM or CDMA)
 - Integrated wireless
 - Optional remote communication with RF modem
- No complex keypad or display
- Access and monitor sites remotely from any smart or Internet-enabled device, anywhere in the world
- Downloaded programs are stored in the controller and available 24/7 on Signature's secure server

HOW TO ORDER

| Model | Zones | Program | Network Communication Device | ISO Country Codes |
|-------|-------|---------|------------------------------|-------------------|
| 8260 | 04 | B | 1 | USA |
| | 06 | I | 2 | FRA |
| | 08 | | 3 | ESP |
| | 10 | | 4 | |
| | 12 | | 5 | |
| | | | 6 | |
| | | | 7 | |
| | | | 8 | |
| | | | 9 | |



EXAMPLE: 8260-04-B1-USA

MODEL: 8260

ZONES: 4 zones = 04; 6 zones = 06; 8 zones = 08; 10 zones = 10; 12 zones = 12

PROGRAM: Basic = B; Intelligent Watering = I

NETWORK COMMUNICATION DEVICE: Ethernet Port with RF = 1; Ethernet Port = 2; Wireless = 3; GSM = 4; CDMA = 5; GSM with RF = 6; CDMA with RF = 7; Wi-Fi = 9

ISO COUNTRY CODE (COUNTRY WHERE CONTROLLER IS TO BE OPERATED):

United States = USA; France = FRA; Spain = ESP, etc.

SPECIFICATIONS

DIMENSIONS (H X W X D)

Cabinet:

7" (17,8 cm) x 5 5/8" (14,3 cm) x 2" (5,1 cm)

Enclosure Material: Plastic

Enclosure Type: Indoor

ELECTRICAL SPECIFICATIONS

USA & Canada

INPUT: 120V AC, 60 hz

OUTPUT: 24V AC, .83 Amp

International

INPUT: 230V AC, 50 hz

OUTPUT: 24V AC, .83 Amp

CERTIFICATIONS:



Part 15 Class B compliant,



EZ PRO™ SERIES

MODEL: 8360, 8600, 8700, 8700D, 8755, 8800

The EZ Pro™ series was designed to give users unparalleled access and control. When equipped with the optional Intelligent Watering Software, approved by WaterSense®, this series of controllers can fine-tune your irrigation system and precisely irrigate each microclimate individually by programming all agronomical attributes of the irrigated landscape, thereby saving you water, time, and money. Pair that with the ability to remotely access the controller from anywhere in the world using the SIGNATURE **SHARE™** app (iOS® or Android™), and you can see why this series sets a new standard for all web-based controllers.

SERIES FEATURES

- Sensor inputs (moisture; flow; temperature; rain; wind)
 - One sensor (8800 model)
 - Two sensor (8360, 8700, 8700D & 8755 models)
- Optional RF radio for wireless connection to remote access point field actuators (available for 8360, 8700, 8700D, 8755, & 8800 models)
- Master valve/pump start
 - One (8360, 8600, 8700 & 8800 models)
 - Four (8700D & 8755 models)
- Flexible programming:
 - Stackable start times (four start times per program)
 - 16 independent programs
 - 24 events per program (8755 model); 48 events per program (8600 model); 64 events per program (8360, 8700, 8700D & 8800 models)
- True calendar clock (Leap-year compatible)
- Three watering schedule options: 12-month calendar; odd/even; interval (1 to 31 days)
- Zone run time options:
 - One minute to 9 hours 59 minutes (8600 model)
 - One minute to 17 hours 59 minutes (8360, 8700, 8700D, 8755 & 8800 models)
- Cycle test; manual test with manual advance
- Non-volatile memory stores programs without AC power or batteries
- Two AA batteries (not included) keep correct time for one year
- Input and output surge protection
- 1.0 amp self-resetting polyswitch for short circuit zone protection
- Rain Delay, Pump Delay, Cycle, and Soak features
- Manual On and Off
- Programmable incident notifications via email
- EPA WaterSense approved



Certified by
ICC-ES



8360 OUTDOOR CONTROLLER

The EZ Pro™ Jr. 8360 outdoor controller gives you all the power of larger controllers, only in a smaller package. With this controller you can choose between an integrated Wi-Fi modem for connection to an existing local area network (LAN or WLAN) or a cellular data modem for direct connection to the Internet. Additionally, it's equipped with powerful diagnostics, flow monitoring, and solenoid fault detection features.

FEATURES

- 4-to-12 station outdoor controller
- Includes 5-year data package from date of connection to SIGNATURE **SHARE™** system
- Network connection options
 - Ethernet port
 - Cellular modem (GSM or CDMA)
 - Integrated wireless
 - Optional remote communication with RF modem
- No complex keypad or display
- Access and monitor sites remotely from any smart or Internet-enabled device, anywhere in the world
- Downloaded programs are stored in the controller and available 24/7 on Signature's secure server

HOW TO ORDER

| Model | Zones | Program | Network Communication Device | ISO Country Codes |
|-------|-------|---------|------------------------------|-------------------|
| 8360 | 04 | B | 1 | USA |
| | 06 | I | 2 | FRA |
| | 08 | | 3 | ESP |
| | 10 | | 4 | |
| | 12 | | 5 | |
| | | | 6 | |
| | | | 7 | |
| | | | 8 | |
| | | | 9 | |



EXAMPLE: 8360-04-B1-USA

MODEL: 8360

ZONES: 4 zones = 04; 6 zones = 06; 8 zones = 08; 10 zones = 10; 12 zones = 12

PROGRAM: Basic = B; Intelligent Watering = I

NETWORK COMMUNICATION DEVICE: Ethernet Port with RF = 1; Ethernet Port = 2; Wireless = 3; GSM = 4; CDMA = 5; GSM with RF = 6; CDMA with RF = 7; Wi-Fi = 9

ISO COUNTRY CODE (COUNTRY WHERE CONTROLLER IS TO BE OPERATED):

United States = USA; France = FRA; Spain = ESP, etc.

SPECIFICATIONS

DIMENSIONS (H X W X D)

Cabinet:

8" (20.3 cm) x 10" (25.4 cm) x 4" (10 cm)

Weather Resistant Cabinet

Enclosure Material: Plastic

Enclosure Type: Outdoor

ELECTRICAL SPECIFICATIONS

USA & Canada

INPUT: 120V AC, 60 hz

OUTPUT: 24V AC, .83 Amp

International

INPUT: 230V AC, 50 hz

OUTPUT: 24V AC, .83 Amp

CERTIFICATIONS:



Part 15 Class B compliant,



8600 OUTDOOR CONTROLLER

Equipped with an integrated cellular data modem, the EZ Pro™ 8600 is a powerful web-based, outdoor controller. Once powered up, this controller's cellular data modem connects directly to the Internet, allowing you to access it from anywhere in the world.

FEATURES

- 8, 12, 16, 20, or 24-station outdoor controller
- Includes 5-year data package from date of connection to SIGNATURE **SHARE™** system
- Network connection options
 - Cellular modem (GSM or CDMA)
- Has the ability to be operated as a conventional controller. A switch on the modem provides the option of running the controller in either local or Internet mode
- Access and monitor sites remotely from any smart or Internet-enabled device, anywhere in the world
- Downloaded programs are stored in the controller and available 24/7 on Signature's secure server



CELLULAR MODEM

HOW TO ORDER

| Model | Zones | Program | Network Communication Device | ISO Country Codes |
|-------|-------|---------|------------------------------|-------------------|
| 8600 | 08 | B | 4 | USA |
| | 12 | I | 5 | FRA |
| | 16 | | | ESP |
| | 20 | | | |
| | 24 | | | |



EXAMPLE: 8600-08-B4-USA

MODEL: 8600

ZONES: 8 zones = 08; 12 zones = 12; 16 zones = 16; 20 zones = 20; 24 zones = 24

PROGRAM: Basic = B; Intelligent Watering = I

NETWORK COMMUNICATION DEVICE: GSM = 4; CDMA = 5

ISO COUNTRY CODE (COUNTRY WHERE CONTROLLER IS TO BE OPERATED):

United States = USA; France = FRA; Spain = ESP, etc.

SPECIFICATIONS

DIMENSIONS (H X W X D)

Cabinet:

9" (22,9 cm) x 12" (30,5 cm) x 5" (12,5 cm)

Weather Resistant Cabinet

Enclosure Material: Plastic

Enclosure Type: Outdoor

ELECTRICAL SPECIFICATIONS

ISO & Canada

INPUT: 120V AC, 60 hz

OUTPUT: 24V AC, 1.25 Amp

International

INPUT: 230V AC, 50 hz

OUTPUT: 24V AC, .83 Amp

CERTIFICATIONS:



Part 15 Class B compliant,



8700 OUTDOOR CONTROLLER

The EZ Pro™ 8700 outdoor controller sets the bar for all web-based controllers. With this controller you can choose between an integrated Wi-Fi modem for connection to an existing local area network (LAN or WLAN) or a cellular data modem for direct connection to the Internet. Additionally, its powerful diagnostics, flow monitoring, solenoid fault detection capabilities, ensure that you'll have a solution for your irrigation needs.

FEATURES

- 8 or 12-station outdoor controller
- Includes 5-year data package from date of connection to SIGNATURE **SHARE™** system
- Network connection options
 - Ethernet port
 - Cellular modem (GSM or CDMA)
 - Integrated wireless
 - Optional remote communication with RF modem
- Current sensing for solenoid fault detection (opens and overloads)
- Programmable current min and max per station
- No complex keypad or display
- Access and monitor sites remotely from any smart or Internet-enabled device, anywhere in the world
- Downloaded programs are stored in the controller and available 24/7 on Signature's secure server

HOW TO ORDER

| Model | Zones | Program | Network Communication Device | ISO Country Codes |
|-------|-------|---------|------------------------------|-------------------|
| 8700 | 08 | B | 1 | USA |
| | 12 | I | 2 | FRA |
| | | | 3 | ESP |
| | | | 4 | |
| | | | 5 | |
| | | | 6 | |
| | | | 7 | |
| | | | 8 | |
| | | | 9 | |

EXAMPLE: 8700-08-B1-USA

MODEL: 8700

ZONES: 8 zones = 08; 12 zones = 12

PROGRAM: Basic = B; Intelligent Watering = I

NETWORK COMMUNICATION DEVICE: Ethernet Port with RF = 1; Ethernet Port = 2; Wireless = 3; GSM = 4; CDMA = 5; GSM with RF = 6; CDMA with RF = 7; Wi-Fi = 9

ISO COUNTRY CODE (COUNTRY WHERE CONTROLLER IS TO BE OPERATED):

United States = USA; France = FRA; Spain = ESP, etc.



TWO-WIRE DECODERS

SPECIFICATIONS

DIMENSIONS (H X W X D)

Cabinet:

9" (22,9 cm) x 12" (30,5 cm) x 5" (12,5 cm)

Weather Resistant Cabinet

Enclosure Material: Plastic

Enclosure Type: Outdoor

ELECTRICAL SPECIFICATIONS

USA & Canada

INPUT: 120V AC, 60 hz

OUTPUT: 24V AC, 1.25 Amp

International

INPUT: 230V AC, 50 hz

OUTPUT: 24V AC, .83 Amp

CERTIFICATIONS:



Part 15 Class B compliant,



8700D OUTDOOR TWO-WIRE DECODER CONTROLLER

The EZ Pro™ 8700D outdoor two-wire decoder controller is the perfect solution for systems requiring up to 125 zones by providing complete flexibility in system design. With this controller you can choose between an integrated Wi-Fi modem for connection to an existing local area network (LAN or WLAN) or a cellular data modem for direct connection to the Internet. Additionally, its powerful diagnostics, flow monitoring, solenoid fault detection capabilities, ensure that you'll have a solution for your irrigation needs.

FEATURES

- 50, 75, 100, or 120-station outdoor controller
- Includes 5-year data package from date of connection to SIGNATURE **SHARE™** system
- Network connection options
 - Ethernet port
 - Cellular modem (GSM or CDMA)
 - Integrated wireless
 - Optional remote communication with RF modem
- Current sensing for solenoid fault detection (opens and overloads)
- Programmable current min and max per station
- No complex keypad or display
- Access and monitor sites remotely from any smart or Internet-enabled device, anywhere in the world
- Downloaded programs are stored in the controller and available 24/7 on Signature's secure server

HOW TO ORDER

| Model | Zones | Program | Network Communication Device | ISO Country Codes |
|-------|-------|---------|------------------------------|-------------------|
| 8700D | 050 | B | 1 | USA |
| | 075 | I | 2 | FRA |
| | 100 | | 3 | ESP |
| | 125 | | 4 | |
| | | | 5 | |
| | | | 6 | |
| | | | 7 | |
| | | | 8 | |
| | | | 9 | |



EXAMPLE: 8700-08-B1-USA

MODEL: 8700D

ZONES: 50 zones = 50; 75 zones = 75; 100 zones = 100; 125 zones = 125

PROGRAM: Basic = B; Intelligent Watering = I

NETWORK COMMUNICATION DEVICE: Ethernet Port with RF = 1; Ethernet Port = 2; Wireless = 3; GSM = 4; CDMA = 5; GSM with RF = 6; CDMA with RF = 7; Wi-Fi = 9

ISO COUNTRY CODE (COUNTRY WHERE CONTROLLER IS TO BE OPERATED):

United States = USA; France = FRA; Spain = ESP, etc.

SPECIFICATIONS

DIMENSIONS (H X W X D)

Cabinet:

9" (22,9 cm) x 12" (30,5 cm) x 5" (12,5 cm)

Weather Resistant Cabinet

Enclosure Material: Plastic

Enclosure Type: Outdoor

ELECTRICAL SPECIFICATIONS

USA & Canada

INPUT: 120V AC, 60 hz

OUTPUT: 24V AC, 1.25 Amp

International

INPUT: 230V AC, 50 hz

OUTPUT: 24V AC, .83 Amp

CERTIFICATIONS:



Part 15 Class B compliant,



8700VM ENCLOSURE MOUNT CONTROLLER

The EZ Pro 8700VM enclosure mount controller defines the benchmark for large heavy duty pedestal or wall mount installations. Plus it sets the bar for all web-based controllers. With this controller you can choose between an integrated Wi-Fi modem for connection to an existing local area network (LAN or WLAN) or a cellular data modem for direct connection to the Internet. Additionally, its powerful diagnostics, flow monitoring, solenoid fault detection capabilities, ensure that you'll have a solution for your irrigation needs.

FEATURES

- 8 to 48-station outdoor controller
- Includes 5-year data package from date of connection to SIGNATURE **SHARE™** system
- Network connection options
 - Ethernet port
 - Cellular modem (GSM or CDMA)
 - Integrated wireless
 - Optional remote communication with RF modem
- Current sensing for solenoid fault detection (opens and overloads)
- Programmable current min and max per station
- No complex keypad or display
- Access and monitor sites remotely from any smart or Internet-enabled device, anywhere in the world
- Downloaded programs are stored in the controller and available 24/7 on Signature's secure server

HOW TO ORDER

| Model | Zones | Program | Network Communication Device | ISO Country Codes |
|--------|-------|---------|------------------------------|-------------------|
| 8700VM | 08 | B | 1 | USA |
| | 16 | I | 2 | FRA |
| | 24 | | 3 | ESP |
| | 32 | | 4 | |
| | 40 | | 5 | |
| | 48 | | 6 | |
| | | | 7 | |
| | | | 8 | |
| | | | 9 | |

EXAMPLE: 8700VM-40-B1-USA

MODEL: 8700VM

ZONES: 8 zones = 08; 16 zones = 16; 24 zones = 24; 32 zones = 32; 40 zones = 40; 48 zones = 48

PROGRAM: Basic = B; Intelligent Watering = I

NETWORK COMMUNICATION DEVICE: Ethernet Port with RF = 1; Ethernet Port = 2; Wireless = 3; GSM = 4; CDMA = 5; GSM with RF = 6; CDMA with RF = 7; Wi-Fi = 9

ISO COUNTRY CODE (COUNTRY WHERE CONTROLLER IS TO BE OPERATED):

United States = USA; France = FRA; Spain = ESP, etc.



VALVE OUTPUT MODULE (PANEL)
(8-STATIONS EACH)

SPECIFICATIONS

DIMENSIONS (H X W X D)

Cabinet:

9" (22,9 cm) x 12" (30,5 cm) x 5" (12,5 cm)

Weather Resistant Cabinet

Enclosure Material: Plastic

Enclosure Type: Outdoor

ELECTRICAL SPECIFICATIONS

USA & Canada

INPUT: 120V AC, 60 hz

OUTPUT: 24V AC, 1.25 Amp

International

INPUT: 230V AC, 50 hz

OUTPUT: 24V AC, .83 Amp

CERTIFICATIONS:



Part 15 Class B compliant,



8755 12-VOLT DC OUTDOOR CONTROLLER

The EZ Connect™ 8755 12-volt DC outdoor controller provides a unique approach to special situations. This controller provides a 12-volt DC output to actuate latching solenoids, while also having the ability to connect to an existing local area network (LAN or WLAN) via a built-in wireless modem or when equipped with the optional cellular data modem that connects directly to the Internet. It can also be powered using a solar panel and battery, making it ideal for areas that do not have access to power.

FEATURES

- 12-station, 12-volt DC output outdoor controller
- Includes 5-year data package from date of connection to SIGNATURE **SHARE™** system
- Network connection options
 - Ethernet port
 - Cellular modem (GSM or CDMA)
 - Integrated wireless
 - Optional remote communication with RF modem
- Current sensing for solenoid fault detection (opens and overloads)
- Optional with solar power
- No complex keypad or display
- Access and monitor sites remotely from any smart or Internet-enabled device, anywhere in the world
- Downloaded programs are stored in the controller and available 24/7 on Signature's secure server

HOW TO ORDER

| Model | Zones | Program | Network Communication Device | ISO Country Codes |
|-------|-------|---------|------------------------------|-------------------|
| 8755 | 12 | B | 1 | USA |
| | | I | 2 | FRA |
| | | | 3 | ESP |
| | | | 4 | |
| | | | 5 | |
| | | | 6 | |
| | | | 7 | |
| | | | 8 | |
| | | | 9 | |



EXAMPLE: 8755-12-B1-USA

MODEL: 8755

ZONES: 12 zones = 12

PROGRAM: Basic = B; Intelligent Watering = I

NETWORK COMMUNICATION DEVICE: Ethernet Port with RF = 1; Ethernet Port = 2; Wireless = 3; GSM = 4; CDMA = 5; GSM with RF = 6; CDMA with RF = 7; Wi-Fi = 9

ISO COUNTRY CODE (COUNTRY WHERE CONTROLLER IS TO BE OPERATED):

United States = USA; France = FRA; Spain = ESP, etc.

SPECIFICATIONS

DIMENSIONS (H X W X D)

Cabinet:

9" (22,9 cm) x 12" (30,5 cm) x 5" (12,5 cm)

Weather Resistant Cabinet

Enclosure Material: Plastic

Enclosure Type: Outdoor

ELECTRICAL SPECIFICATIONS

USA & Canada

INPUT: 120V AC, 60 hz

OUTPUT: 24V AC, 1.25 Amp

International

INPUT: 230V AC, 50 hz

OUTPUT: 24V AC, .83 Amp

CERTIFICATIONS:



Part 15 Class B compliant,



8800 OUTDOOR CONTROLLER

The EZ Pro™ 8800 outdoor controller is equipped with your choice of an integrated Wi-Fi modem for connection to an existing local area network (LAN or WLAN) or a cellular data modem for direct connection to the Internet. Additionally, its powerful diagnostics, flow monitoring, solenoid fault detection capabilities, ensure that you'll have a solution for your irrigation needs.

FEATURES

- 16, 20, or 24-station outdoor controller
- Includes 5-year data package from date of connection to SIGNATURE **SHARE™** system
- Network connection options
 - Ethernet port
 - Cellular modem (GSM or CDMA)
 - Integrated wireless
 - Optional remote communication with RF modem
- Current sensing for solenoid fault detection (opens and overloads)
- Programmable current min and max per station
- No complex keypad or display
- Access and monitor sites remotely from any smart or Internet-enabled device, anywhere in the world
- Downloaded programs are stored in the controller and available 24/7 on Signature's secure server

HOW TO ORDER

| Model | Zones | Program | Network Communication Device | Remote Communication Device | ISO Country Codes |
|-------|-------|---------|------------------------------|-----------------------------|-------------------|
| 8800 | 16 | B | 1 | 0 | USA |
| | 20 | I | 2 | 1 | FRA |
| | 24 | | 3 | | ESP |
| | | | 4 | | |
| | | | 5 | | |
| | | | 6 | | |
| | | | 7 | | |
| | | | 8 | | |
| | | | 9 | | |



EXAMPLE: 8800-16-B1-0-USA

MODEL: 8800

ZONES: 16 zones = 16; 20 zones = 6; 24 zones = 24

PROGRAM: Basic = B; Intelligent Watering = I

NETWORK COMMUNICATION DEVICE: Ethernet Port with RF = 1; Ethernet Port = 2; Wireless = 3; GSM = 4; CDMA = 5; GSM with RF = 6; CDMA with RF = 7; Wi-Fi = 9

REMOTE COMMUNICATIONS DEVICE: None = 0; Access Point = 1

ISO COUNTRY CODE (COUNTRY WHERE CONTROLLER IS TO BE OPERATED):

United States = USA; France = FRA; Spain = ESP, etc.

SPECIFICATIONS

DIMENSIONS (H X W X D)

Cabinet:

9" (22,9 cm) x 12" (30,5 cm) x 5" (12,5 cm)

Weather Resistant Cabinet

Enclosure Material: Plastic

Enclosure Type: Outdoor

ELECTRICAL SPECIFICATIONS

USA & Canada

INPUT: 120V AC, 60 hz

OUTPUT: 24V AC, 1.25 Amp

International

INPUT: 230V AC, 50 hz

OUTPUT: 24V AC, .83 Amp

CERTIFICATIONS:



Part 15 Class B compliant,



GALAXY-RT™ SERIES

The Galaxy-RT™ series comes equipped with the WaterSense® approved, Intelligent Watering Software (only in the U.S., Europe, and Middle East). This series of controllers can fine-tune your irrigation system and precisely irrigate each microclimate individually by programming all agronomical attributes of the irrigated landscape, thereby saving you water, time, and money. Pair that with the ability to remotely access the controller from anywhere in the world using the SIGNATURE **SHARE™** app (iOS® or Android™), and you can see why this series produces the go-to controllers for commercial or sports turf applications.

SERIES FEATURES

- Integrated smart sensor network module
- Optional RF radio for wireless connection to remote access point field actuators)
- 4 Master valve/pump start (programmable by zone)
- Flexible programming:
 - Stackable start times (four start times per program)
 - 16 independent programs
 - 64 events per program
- True calendar clock (Leap-year compatible)
- Three watering schedule options: 12-month calendar; odd/even; interval (1 to 31 days)
- Zone run time: One minute to 17 hours 59 minutes
- Cycle test; manual test with manual advance
- Non-volatile memory stores programs without AC power or batteries
- Two AA batteries (not included) keep correct time for one year
- Input and output surge protection
- 1.0 amp self-resetting polyswitch for short circuit zone protection
- Rain Delay, Pump Delay, Cycle, and Soak features
- Manual On and Off
- Programmable incident notifications via email
- Reporting
- EPA WaterSense approved



GALAXY-RT™ WALL MOUNT OUTDOOR CONTROLLER

The Galaxy-RT™ wall-mount outdoor controller is perfect for commercial and sports turf applications. With this controller you can choose between an integrated Wi-Fi modem for connection to an existing local area network (LAN or WLAN) or a cellular data modem for direct connection to the Internet. Additionally, its powerful diagnostics, flow monitoring, solenoid fault detection capabilities, ensure that you'll have a solution for your irrigation needs.

FEATURES

- 8, 16, 32, or 48-station outdoor controller (up to 250 stations with decoder modules)
- Includes 5-year data package from date of connection to SIGNATURE **SHARE™** system
- Network connection options
 - Ethernet port
 - Cellular modem (GSM or CDMA)
 - Integrated wireless
 - Optional remote communication with RF modem
- Current sensing for solenoid fault detection (opens and overloads)
- Programmable current min and max per station
- No complex keypad or display
- Access and monitor sites remotely from any smart or Internet-enabled device, anywhere in the world
- Downloaded programs are stored in the controller and available 24/7 on Signature's secure server

HOW TO ORDER

| Model | Description | Power Supply | Type | Stations | Network Communication Device |
|-------|-------------|--------------|------|----------|------------------------------|
| GAL | SLWY | 1 | AP | 008 | X4 |
| | | 2 | BP | 016 | X5 |
| | | | CP | 024 | |
| | | | DP | 032 | |
| | | | | 040 | |
| | | | | 048 | |
| | | | | 064 | |
| | | | | 080 | |
| | | | | 096 | |
| | | | | 125 | |
| | | | | 250 | |



EXAMPLE: GAL-SLWY-1AP-008-X4

MODEL: Galaxy-RT

DESCRIPTION: Grey Wall Mount = SLWY

POWER SUPPLY: 110V AC = 1; 240V AC= 2

TYPE: 16-Station Small-Terminal Valve Module = AP; 8-Station Large-Terminal Valve Module = BP;
16-Station Large-Terminal Valve Module = CP; Decoder Module = DP

NETWORK COMMUNICATION DEVICE: GSM = X4; CDMA = X5

GALAXY-RT™ PEDESTAL OUTDOOR CONTROLLER

The Galaxy-RT™ pedestal outdoor controller is perfect for commercial and sports turf applications. With this controller you can choose between an integrated Wi-Fi modem for connection to an existing local area network (LAN or WLAN) or a cellular data modem for direct connection to the Internet. Additionally, its powerful diagnostics, flow monitoring, solenoid fault detection capabilities, ensure that you'll have a solution for your irrigation needs.

FEATURES

- 8-to-96 station outdoor controller (up to 250 station when paired with decoder modules)
- Includes 5-year data package from date of connection to SIGNATURE **SHARE™** system
- Network connection options
 - Ethernet port
 - Cellular modem (GSM or CDMA)
 - Integrated wireless
 - Optional remote communication with RF modem
- Current sensing for solenoid fault detection (opens and overloads)
- Programmable current min and max per station
- No complex keypad or display
- Access and monitor sites remotely from any smart or Internet-enabled device, anywhere in the world
- Downloaded programs are stored in the controller and available 24/7 on Signature's secure server

HOW TO ORDER

| Model | Description | Power Supply | Type | Stations | Network Communication Device |
|-------|-------------|--------------|------|----------|------------------------------|
| GAL | SPEY | 1 | AP | 008 | X4 |
| | SPEB | 2 | BP | 016 | X5 |
| | SPET | | CP | 024 | |
| | SPEG | | DP | 032 | |
| | SVDS | | | 040 | |
| | SVJS | | | 048 | |
| | | | | 064 | |
| | | | | 080 | |
| | | | | 096 | |
| | | | | 125 | |
| | | | | 250 | |

EXAMPLE: GAL-SPEY-1AP-008-X4

MODEL: Galaxy-RT

DESCRIPTION: Grey Granite Pedestal = SPEY; Black Granite Pedestal = SPEB;
 Tan Pedestal = SPET; Green Granite Pedestal = SPEG;
 Stainless Steel Front Entry 18" Enclosure=SVDS; Stainless Steel Front Entry 16" Enclosure=SVJS

POWER SUPPLY: 110V AC = 1; 240V AC= 2

TYPE: 16-Station Small-Terminal Valve Module = AP; 8-Station Large-Terminal Valve Module = BP;
 16-Station Large-Terminal Valve Module = CP; Decoder Module = DP

NETWORK COMMUNICATION DEVICE: GSM = X4; CDMA = X5



PLASTIC PEDESTAL

HEAVY-DUTY STAINLESS
STEEL PEDESTAL
(Front Opening Style)

HEAVY-DUTY STAINLESS
STEEL PEDESTAL
(Top Opening Style)

EXSILIO™ SERIES

MODEL: 8905, 8920, 8930, 8940, 8945, 8950

A battery or alternative powered central platform. The Exsilio family of products, when coupled to SIGNATURE **SHARE™**, allows for an almost unlimited number of devices to be networked together and directly controlled from a smartphone, tablet PC or smart wearable device.

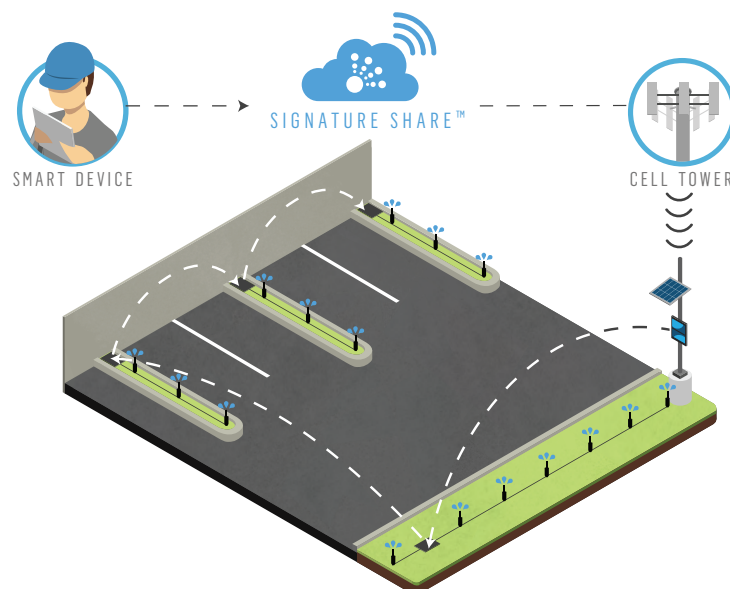
The system does not require a hub or router to function locally, or an end-to-end IP connection which means it offers a simple and seamless user experience. Connectivity. The Exsilio family is compatible to all devices connected to the SIGNATURE **SHARE™** platform and with encrypted network technology, combined with other measures, provides safe and secure messaging to all field installed devices.

Importantly, for a positive user and field maintenance experience, the technology designed into the Exsilio family of products significantly extends battery life for sensors and valve actuators, etc. Some battery powered devices, such as security sensors and light switches, need only wake up when they are triggered by user activation such as a window being opened. At all other times the devices would be in sleep mode, providing extremely long battery life.

The Exsilio family of products can provide complete area coverage, even in RF dead zones, without the need to add extraneous relays or complex and sensitive networks for each field mounted device. The Exsilio family of products are completely interoperable and thus, users needing to fragment their control platform to manage their evolving requirements can rely on a scalable solution rather than a fragmented solution.

SERIES FEATURES

- Fully integrated to SIGNATURE **SHARE™**
- Extension of any SIGNATURE **SHARE™** controller [when fitted with appropriate hardware/software]
- Monitor and control battery life
- Operates with tried & tested Signature® Patented technology
- Extension of a controllers communications and control network for remote locations
- Fully integrated as a central control product; not an ad hoc device
- Can operate with battery or solar powered technology
- Seamless integration into existing SIGNATURE **SHARE™** networks



8905 SINGLE STATION ACCESS POINT FIELD ACTUATOR

The SIGNATURE **SHARE**™ 8905 is a battery operated valve actuator. When connected to an 8920 access point, the 8905 is fully accessible and can be operated remotely by any smartphone (iOS® or Android™), or any Internet-enabled device via the SIGNATURE **SHARE**™ platform.

FEATURES

- Fits all Signature® turf valves directly & various other standard valves, via the appropriate adaptor;
- Can be used as a Master Valve control actuator
- LCD displays clock and programming
- Timed, Manual On and Off
- Run time: One minute to 12 hours
- Six programs
- Mist cycle
- True calendar clock (Leap-year compatible)
- Programmable rain delay
- Waterproof design tested to IP68, 6 ft. (1.8 m)
- Three watering schedule options: days of the week; odd/even; interval (1 to 31 days)



FOR USE WITH:
SIGNATURE **SHARE**™ 8920 access point

SPECIFICATIONS

DIMENSIONS (H X W X D)

5½" (14 cm) x 3½" (9 cm)
Enclosure Material: Plastic
Enclosure Type: Outdoor
Enclosure Rating: IP68*

* Self Certified

ELECTRICAL SPECIFICATIONS

Factory installed 3.6 V lithium battery

CERTIFICATIONS:



Part 15 Class B compliant,



8920 ACCESS POINT DEVICE

The SIGNATURE **SHARE**™ 8920 is an access point for remotely controlling a SIGNATURE **SHARE**™ 8905 battery valve actuator. The 8920 communicates wirelessly with several SIGNATURE **SHARE**™ devices when equipped with SIGNATURE **SHARE**™ Access Point Modem, allowing direct Internet access to the field actuator. The field actuator can then be accessed from any smartphone (iOS® or Android™), or any Internet-enabled device via the SIGNATURE **SHARE**™ platform.

FEATURES

- Integrated access point modem
- Integrated antenna
- External antenna (various antenna options available)
- Operates single 8905 SIGNATURE **SHARE**™ valve actuator
- Acts as a gateway for remotely located 8905 SIGNATURE **SHARE**™ valve actuators
- Communicates wirelessly with a **SHARE**™ controller
- Communicates with additional access points
- Can be powered via Solar Power (various solar options available)
- Waterproof design tested to IP68, 6 ft. (1.8 m)



FOR USE WITH:

The following SIGNATURE **SHARE**™ Controllers:

EZ Connect™ 8255; EZ Connect™ 8260; EZ Pro™ Jr. 8360;
EZ Pro™ 8700; EZ Pro™ 8700D; EZ Pro™ 8700VM; EZ Pro™ 8755;
EZ Pro™ 8800; Galaxy-RT™ Pedestal; Galaxy-RT™ Wall Mount;
Galaxy-RT™ Solar

SPECIFICATIONS

DIMENSIONS (H X W X D)

4¼" (10,8 cm) x 3¼" (8,25 cm)

Enclosure Material: Plastic

Enclosure Type: Outdoor

Enclosure Rating: IP68*

* Self Certified

ELECTRICAL SPECIFICATIONS

Two AA Alkaline Batteries
(not included)

CERTIFICATIONS:



Part 15 Class B compliant,



8930 FIELD ACTUATOR WITH INTEGRATED ACCESS POINT

The SIGNATURE **SHARE**™ 8930 field actuator with integrated access point modem communicates wirelessly with several SIGNATURE **SHARE**™ devices allowing direct internet access to the field actuator. The 8930 can be accessed from any smartphone (iOS® or Android™), or any Internet-enabled device via the SIGNATURE **SHARE**™ platform.

FEATURES

- Operates up to six DC latching solenoids
- Can have up to 250 ft. (76 m) of 18 AWG (1mm) direct buried wire between each solenoid and the 8930 controller
- Integrated access point modem
- Integrated antenna
- External antenna (various antenna options available)
- Optional 8905 SIGNATURE **SHARE**™ valve actuator
- Communicates wirelessly with a SIGNATURE **SHARE**™ controller
- Communicates with additional access points
- Requires two AA batteries (not included)
- Can be powered via Solar Power (various solar options available)
- Waterproof design tested to IP68, 6 ft. (1.8 m)



FOR USE WITH:

The following SIGNATURE **SHARE**™ Controllers:

EZ Connect™ 8255; EZ Connect™ 8260; EZ Pro™ Jr. 8360;
EZ Pro™ 8700; EZ Pro™ 8700D; EZ Pro™ 8700VM; EZ Pro™ 8755;
EZ Pro™ 8800; Galaxy-RT™ Pedestal; Galaxy-RT™ Wall Mount;
Galaxy-RT™ Solar

SPECIFICATIONS

DIMENSIONS (H X W X D)

4¼" (10,8 cm) x 3¼" (8,25 cm)

Enclosure Material: Plastic

Enclosure Type: Outdoor

Enclosure Rating: IP68*

* Self Certified

ELECTRICAL SPECIFICATIONS

Two AA Alkaline Batteries
(not included)

CERTIFICATIONS:



Part 15 Class B compliant,



8940 FIELD REPEATER WITH INTEGRATED ACCESS POINT

The SIGNATURE **SHARE**™ 8940 field repeater with integrated access point modem communicates wirelessly with several SIGNATURE **SHARE**™ devices allowing direct internet access to the field actuator. The 8940 can be accessed from any smartphone (iOS® or Android™), or any Internet-enabled device via the SIGNATURE **SHARE**™ platform.

The SIGNATURE **SHARE**™ 8940 is an access point field repeater device that is capable of repeating messages for remotely located SIGNATURE **SHARE**™ 8920 devices or remotely located SIGNATURE **SHARE**™ 8950 devices. The 8940 communicates wirelessly with a variety of SIGNATURE **SHARE**™ devices when they are equipped with SIGNATURE **SHARE**™ Access Point Modem technology, allowing direct Internet access to the field. The field repeater can then be accessed from any smartphone (iOS® or Android™), or any Internet-enabled device via the SIGNATURE **SHARE**™ platform.

FEATURES

- Capable of connecting to multiple access point field repeater devices up to 1,900 ft. (600 m)
- Integrated access point modem
- Integrated antenna
- External antenna (various antenna options available)
- Communicates wirelessly with a SIGNATURE **SHARE**™ controller up to 1,900 ft. (600 m)
- Communicates with additional access points
- Requires two AA batteries (not included)
- Can be powered via Solar Power (various solar options available)
- Waterproof design tested to IP68, 6 ft. (1.8 m)



FOR USE WITH:

The following SIGNATURE **SHARE**™ Controllers:
 EZ Connect™ 8255; EZ Connect™ 8260;
 EZ Pro™ Jr. 8360; EZ Pro™ 8700; EZ Pro™ 8700D;
 EZ Pro™ 8700VM; EZ Pro™ 8755; EZ Pro™ 8800;
 Galaxy-RT™ Pedestal; Galaxy-RT™ Wall Mount;
 Galaxy-RT™ Solar

SPECIFICATIONS

DIMENSIONS (H X W X D)

4 " (10,8 cm) x 3 " (8,25 cm)
 Enclosure Material: Plastic
 Enclosure Type: Outdoor
 Enclosure Rating: IP68*

* Self Certified

ELECTRICAL SPECIFICATIONS

Two AA Alkaline Batteries (not included)

CERTIFICATIONS:



Part 15 Class B compliant,



8945 POLE MOUNTED FIELD REPEATER WITH INTEGRATED ACCESS POINT

The SIGNATURE **SHARE**™ 8945 pole mounted field repeater with integrated access point modem communicates wirelessly with several SIGNATURE **SHARE**™ devices allowing direct internet access to the field actuator. The 8945 can be accessed from any smartphone (iOS® or Android™), or any Internet-enabled device via the SIGNATURE **SHARE**™ platform.

The SIGNATURE **SHARE**™ 8945 is an access point field repeater device that is capable of repeating messages for remotely located SIGNATURE **SHARE**™ devices or remotely located SIGNATURE **SHARE**™ 8950 devices. The 8945 communicates wirelessly with a variety of SIGNATURE **SHARE**™ devices when they are equipped with SIGNATURE **SHARE**™ Access Point Modem technology, allowing direct Internet access to the field. The field repeater can then be accessed from any smartphone (iOS® or Android™), or any Internet-enabled device via the SIGNATURE **SHARE**™ platform.

FEATURES

- Capable of connecting to SIGNATURE **SHARE**™ controllers and multiple access point field repeater devices up to 1,900 ft. (600 m)
- Integrated access point modem
- External antenna (various antenna options available)
- Communicates wirelessly with a SIGNATURE **SHARE**™ controller up to 1,900 ft. (600 m)
- Communicates with additional access points
- Powered via Solar Power (various solar options available)
- Waterproof design tested to IP65



FOR USE WITH:

The following SIGNATURE **SHARE**™ Controllers:
EZ Connect™ 8255; EZ Connect™ 8260;
EZ Pro™ Jr. 8360; EZ Pro™ 8700; EZ Pro™ 8700D;
EZ Pro™ 8700VM; EZ Pro™ 8755; EZ Pro™ 8800;
Galaxy-RT™ Pedestal; Galaxy-RT™ Wall Mount;
Galaxy-RT™ Solar

SPECIFICATIONS

DIMENSIONS (H X W X D)

4 " (10,8 cm) x 3 " (8,25 cm)
Enclosure Material: Plastic
Enclosure Type: Outdoor
Enclosure Rating: IP68*

* Self Certified

ELECTRICAL SPECIFICATIONS

Two AA Alkaline Batteries (not included)

CERTIFICATIONS:



Part 15 Class B compliant,



8950 SENSOR GATEWAY WITH INTEGRATED ACCESS POINT

The SIGNATURE **SHARE**™ 8950 sensor gateway with integrated access point modem communicates wirelessly with several SIGNATURE **SHARE**™ devices allowing direct internet access to the field sensor. The 8950 can be accessed from any smartphone (iOS® or Android™), or any Internet-enabled device via the SIGNATURE **SHARE**™ platform.

The SIGNATURE **SHARE**™ 8950 is a sensor gateway device that is capable of receiving messages for remotely located SIGNATURE **SHARE**™ approved sensing devices. The 8950 communicates wirelessly with a variety of SIGNATURE **SHARE**™ devices when they are equipped with SIGNATURE **SHARE**™ Access Point Modem technology, allowing direct Internet access to the field. The field repeater can then be accessed from any smartphone (iOS® or Android™), or any Internet-enabled device via the SIGNATURE **SHARE**™ platform.

FEATURES

- Has Two (2) sensor ports for connection to compatible SIGNATURE **SHARE**™ Sensors
- Integrated access point modem
- Integrated antenna
- External antenna (various antenna options available)
- Communicates wirelessly with a SIGNATURE **SHARE**™ controller up to 1,900 ft. (600 m)
- Communicates with additional access points
- Requires two AA batteries (not included)
- Can be powered via Solar Power (various solar options available)
- Waterproof design tested to IP68, 6 ft. (1.8 m)



FOR USE WITH:

The following SIGNATURE **SHARE**™ Controllers:

EZ Connect™ 8255; EZ Connect™ 8260; EZ Pro™ Jr. 8360;
EZ Pro™ 8700; EZ Pro™ 8700D; EZ Pro™ 8700VM; EZ Pro™ 8755;
EZ Pro™ 8800; Galaxy-RT™ Pedestal; Galaxy-RT™ Wall Mount;
Galaxy-RT™ Solar

SPECIFICATIONS

DIMENSIONS (H X W X D)

4 " (10,8 cm) x 3 " (8,25 cm)

Enclosure Material: Plastic

Enclosure Type: Outdoor

Enclosure Rating: IP68*

* Self Certified

ELECTRICAL SPECIFICATIONS

Two AA Alkaline Batteries (not included)

CERTIFICATIONS:



Part 15 Class B compliant,



VALVE OUTPUT MODULES

For use with the Galaxy-RT™ Wall Mount, Galaxy-RT™ Pedestal, and EZ Pro™ 8700VM controllers.

HIGH-SURGE PROTECTION MODULE

| Model | Description |
|--------|--|
| ACVLV0 | Valve Module; 8-Station; B-Series Large Terminal Model |



TWO-WIRE DECODERS

For use with the Galaxy-RT™ Wall Mount, Galaxy-RT™ Pedestal, and EZ Pro™ 8700D controllers.

STANDARD DECODER TYPE

| Model | Description |
|--------|---|
| CD-111 | Field Controller; 1 Address – 1 Solenoid per Address |
| CD-112 | Field Controller; 1 Address – 2 Solenoids per Address |
| CD-122 | Field Controller; 2 Addresses – 2 Solenoids per Address |
| CD-132 | Field Controller; 3 Addresses – 2 Solenoids per Address |
| CD-142 | Field Controller; 4 Addresses – 2 Solenoids per Address |



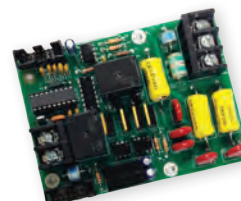
DC DECODER [LATCHING] TYPE

| Model | Description |
|----------|---|
| CD-111DC | DC Field Controller; 1 Address – 1 Solenoid per Address |
| CD-122DC | DC Field Controller; 2 Addresses – 1 Solenoid per Address |

(Use the Decoder Wiring Calculator or accredited Irrigation Consultant for advice before installation of decoders or wires.)

TWO-WIRE ACCESSORIES

| Model | Description |
|--------|----------------------------------|
| ACDEC1 | 125-Zone Decoder Modulator Board |
| ADPROG | Decoder Field Programmer |
| TWSPK | Decoder Surge Protector Kit |



SOLAR PANEL & BATTERY KITS

For use with the EZ Pro™ 8755 DC controllers.

5W & 10W POLE MOUNTED KITS

| Model | Description |
|------------|--|
| SCSO120905 | Share Series AccessPoint 5W Solar Panel & Battery Kit |
| SCSO120910 | Share Series AccessPoint 10W Solar Panel & Battery Kit |



SIGNATURE SHARE™ ACCESSORIES

SMART SENSOR DEVICES

For use with EZ Pro™ 8700; EZ Pro™ 8700D; EZ Pro™ 8700VM; EZ Pro™ 8800; EZ Pro™ 8755; Galaxy-RT™ Pedestal; Galaxy-RT™ Wall Mount; Galaxy-RT™ Solar

| Model | Description |
|--------|--------------------------------------|
| SSSCM | Smart Sensor Controller Module |
| SSSD11 | Smart Sensor Decoder [Direct Burial] |

WEATHER AND SOIL SENSOR DEVICES

For use with EZ Connect™ 8250; EZ Connect™ 8255; EZ Connect™ 8260; EZ Pro™ Jr. 8360; EZ Pro™ 8600; EZ Pro™ 8700; EZ Pro™ 8700D; EZ Pro™ 8755; Galaxy-RT™ Pedestal; Galaxy-RT™ Wall Mount; Galaxy-RT™ Solar

| Model | Description |
|--------|---|
| 8501 | Rain-Trip Rain Sensor |
| ACMSWS | Mini-Weather Station |
| ACSFS | Frost Sensor; Switch Output |
| ACSMS | Soil Moisture Sensor; Switch Output |
| ACSTS | Temperature Sensor; Switch Output |
| ACTRBP | Tipping Rain Bucket Plastic |
| ACWS | Wind Sensor Trip Switch |
| ACWS1C | Wind Trip Sensor; Combination (Speed & Direction) |

COMMUNICATIONS OPTIONS & MODULES

For use with EZ Connect™ 8255; EZ Connect™ 8260; EZ Pro™ Jr. 8360; EZ Pro™ 8700; EZ Pro™ 8700D; EZ Pro™ 8755; EZ Pro™ 8800; Galaxy-RT™ Pedestal; Galaxy-RT™ Wall Mount; Galaxy-RT™ Solar

| Model | Description |
|--------|---|
| SFDMI | Wi-Fi Data Modem (ISO) |
| SIGDMI | Indoor GSM Data Module (ISO) |
| SWAPEI | Wireless AccessPoint External Ant (ISO) |
| SWAPII | Wireless AccessPoint Integrated Ant (ISO) |

For use with EZ Pro™ 8600

| Model | Description |
|-----------|---------------------------|
| AGCRT100L | GSM Cellular Modem (ISO) |
| ACCRT100L | CDMA Cellular Modem (USA) |

FLOW SENSOR

SCS PULSE FLOW SENSOR

The PVC T-Mount flow sensors utilize proven impeller-based technology to accurately monitor and control flow for irrigation systems. The sensor has PVC socket connections to allow for easy installation, while also providing a digital output signal that is directly proportionate to the flow. This output signal is designed to duplicate the electrical characteristics of existing impeller flow sensors, making them compatible with all of Signature's control products.

APPLICATIONS

- Flow sensing applications in PVC piping systems above and below grade
- Flow sensing input to irrigation control systems
- Flow sensing applications for water recycling, water harvesting, or water reclamation applications

FEATURES

- Available in 1", 1-1/2", and 2"
- Can be installed up to 2,000 feet from the controller or other receiving device using a shielded and jacketed, twisted pair communication cable
- Solid-state sensing electronics for improved performance



SPECIFICATIONS

FLOW RANGE

- 0.25 to 15 FPS

PRESSURE RATING

- 240 PSI Maximum working pressure

TEMPERATURE RANGE

- 32°F to 140°F (0° to 60° C)

WETTED MATERIALS

- Impeller – HDPE (High Density Polyethylene);
- Mounting Tee; Type 1 PVC
- O-ring; BUNA N
- Retaining Nut — Type 1 PVC
- Sensor Insert — Type 1 PVC
- Shaft – Tungsten Carbide

OUTPUT SIGNAL

- Frequency Range 0.3 Hz to 200 Hz

TRANSDUCER EXCITATION - all electronics versions except – sensor suffix 009

- Quiescent current 120 μ A@8VDC to 35VDC max.
- Off State (VHigh) = Supply Voltage - (120 μ A X Source Resistance)
- On State (VLow) = Max. 0.85 Volts@50mA (10 Ω +0.7VDC)

ELECTRICAL CABLE

- Standard Lead length = 48 inches single pair conductor solid copper #18 AWG leads with direct burial insulation [Maximum length <2,000 feet with direct burial, twisted pair shielded cable]

PART NUMBERS

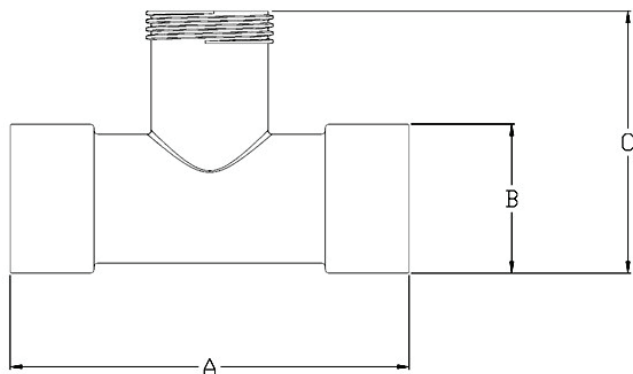
STANDARD TWO-WIRE PULSE; FOR USE ON AL SIGNATURE SHARE CONTROLLER & SMART SENSOR DEVICE(S)

- ACFM100TPVC Flow-Sensor Pulse Output with PVC-Tee Mount - 1"
- ACFM150TPVC Flow-Sensor Pulse Output with PVC-Tee Mount - 1-1/2"
- ACFM200TPVC Flow-Sensor Pulse Output with PVC-Tee Mount - 2"
- ACFM1234INS Flow-Sensor Pulse Output - Insert only

SCS-PROTOCOL; FOR USE ON SIGNATURE SHARE EXSILIO SERIES)

- LPFM100TPVC Flow-Sensor SCS Pulse Output with PVC-Tee Mount - 1"
- LPFM150TPVC Flow-Sensor SCS Pulse Output with PVC-Tee Mount - 1-1/2"
- LPFM200TPVC Flow-Sensor SCS Pulse Output with PVC-Tee Mount - 2"
- LPFM1234INS Flow-Sensor SCS Pulse Output - Insert only.

FLOW SENSOR DIMENSIONS



| SIZE | A LENGTH | B DIAMETER | C HEIGHT |
|--------|--------------------|-------------------|--------------------|
| 1" | 5.625" (143 mm) | 1.710" (43 mm) | 3.487" (88 mm) |
| 1 1/2" | 6.188" (157 mm) | 2.310" (58 mm) | 4.065" (103 mm) |
| 2" | 7.00" (178 mm) | 2.875" (73 mm) | 4.573" (116 mm) |



NOTES





FOR MORE INFORMATION

SIGNATURE CONTROL SYSTEMS, INC.

www.SignatureControlSystems.com

WORLD HEADQUARTERS

16485 Laguna Canyon Rd., Suite 130, • Irvine • California • 92618
Tel: 949.580.3640 • Fax: 949.580.3645

USA TOLL FREE:
866.4SIGNATURE

©2015 Signature Control Systems, Inc. All rights reserved.

Signature Control Systems, Inc. believes the contents and specifications of its catalog, its website, any and all ads and promotions are correct at the time of printing. We assume no liability for any errors in listings, specifications, part numbers, prices or model applications. We reserve the right to change specifications, product descriptions, product quality, product offerings, pricing and application at any time without prior written or oral notice.

All trademarks, service marks, trade names, trade dress, product names and logos appearing or referenced in this document are the property of their respective owners. All other trademarks are the property of Signature Control Systems, Inc.

99903468 - RV2 © 11.2015