



## SIGNATURE SHARE™ - GOLF



### HOW IT WORKS

**SIGNATURE SHARE™** is an internet-based central control system used with SIGNATURE SHARE™ compatible products. It communicates with SIGNATURE SHARE™ irrigation field controllers using cellular connectivity, and allows management of controller from anywhere in the world via the internet. Along with all the advantages of internet-based access to remote irrigation field controllers, SIGNATURE SHARE™ provides a weather-based irrigation scheduling option. Location-specific weather data (ET) is delivered daily to irrigation controllers which allows the realization of quantifiable water savings and reduced operational costs. The exciting features of SIGNATURE SHARE™ can be added to all SIGNATURE SHARE™ compatible products, without any changes to the controller other than the addition of a single communications modem board. (May require a cellular data plan from your local carrier.)

GOLF  
CENTRAL CONTROLS

### FEATURES & BENEFITS

#### REMOTE ACCESS

- SIGNATURE SHARE™ is accessible from any internet capable computer anywhere in the world
- Remotely monitor sites from one location or an infinite number of locations
- All programs are stored in the controller once downloaded, and are available 24/7 on our secure server

#### COST EFFECTIVE

- SIGNATURE SHARE™ requires no expensive desktop software purchases or support plans
- Eliminates need for dedicated irrigation computer and extended service plans
- Abolishes time consuming software upgrades and related programming

#### EASY TO USE

- SIGNATURE SHARE™ requires no extensive backups; we handle all upgrades, support and maintenance
- Upgrades are uploaded seamlessly; when you log on they are ready
- Menus are user friendly and intuitive using graphical user interface

#### WEATHER-BASED IRRIGATION SCHEDULING (ET) [OPTIONAL SERVICE]

- SIGNATURE SHARE™ uses real-time weather data (ET) and transmits it to each controller
- Smart controller functions save water, time, and expense
- Eliminates requirement to purchase a weather station or other weather services
- The addition of a SIGNATURE SHARE™ communications board makes your existing or new SIGNATURE SHARE™ controller live on the web
- SIGNATURE SHARE™ accesses any new or existing SIGNATURE SHARE™ compatible products with the addition of a single communications board

#### SMART WATERING APPLICATION

- Configure site agronomics to effectively control irrigation.
- Uses state of the art ET tracking data to replenish crop demands.
- By operating in this mode, eliminates the expense and maintenance of remote sensors or weather stations.
- Totally seamless downloading of ER data and together with site data, will only apply the required irrigations needs ... not anything more.
- No need for expensive computers or software to control irrigation controllers.

#### STANDARD WATERING APPLICATION

- Operate the controller from the ease of your iPhone® or iPad®; no complicated manuals or frustrations.
- Simple programming tools effectively guide through setup and operation.
- Integrates with optional ET download for automatic updating of programs.
- Web based software means always the most current user interface.
- Available in multiple languages.

#### \* SCS Share Website System Requirements

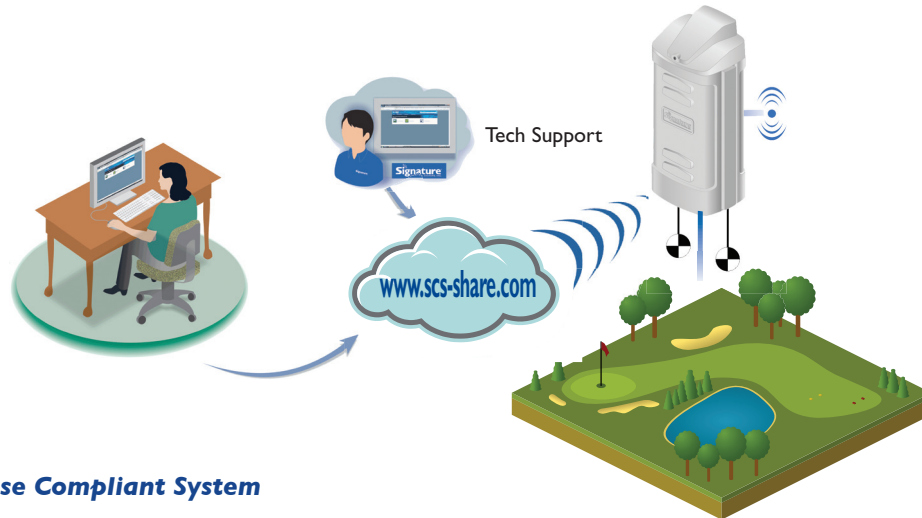
##### Supported Browsers (JavaScript Enabled):

- Internet Explorer 9+
- Google Chrome 30+
- Mozilla Firefox 24+
- Safari 5+

##### Other Requirements:

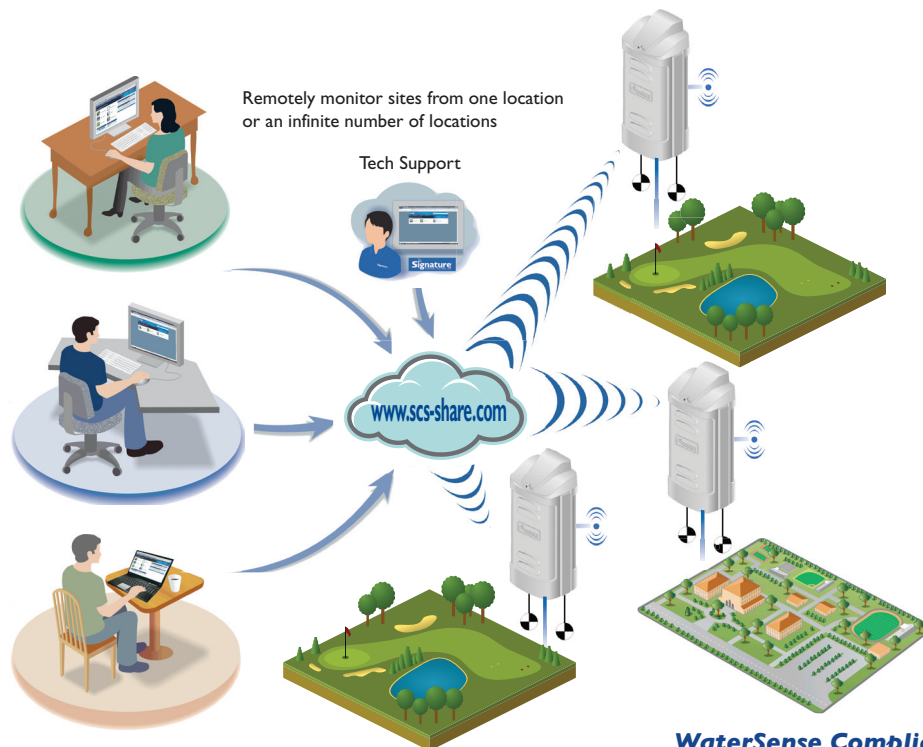
- Adobe Flash Player
- Best viewed at 1024 x 768 or higher resolution

**USAGE EXAMPLE: SIGNATURE SHARE™ — Single User / Single Site**



*WaterSense Compliant System*

**USAGE EXAMPLE: SIGNATURE SHARE™ — Multiple Users / Multiple Sites**



Remotely monitor sites from one location or an infinite number of locations

Tech Support



www.scs-share.com

*WaterSense Compliant System*



**SIGNATURE CONTROL SYSTEMS, INC.**

[www.SignatureControlSystems.com](http://www.SignatureControlSystems.com)

**WORLD HEADQUARTERS**

16485 Laguna Canyon Rd., Suite 130,  
Irvine • California • 92618  
Tel: 949.580.3640 • Fax: 949.580.3645

**MANUFACTURING FACILITY**

8800 N. Allen Rd., • Peoria • Illinois • 61615  
Tel: 949.580.3640 • Fax: 949.580.3645

**EUROPE & MIDDLE EAST**

5 rue de la Vallée Yart  
78640 Saint Germain de la Grange • France  
Tel: +33.13.489.9056 • Fax: +33.13.489.6025

**USA TOLL FREE:**

**8 6 6 . 4 S I G N A T U R E**

**REGIONAL OFFICES**

**ASIA** Shenzhen • Guangdong Province • 518131 • Tel: (86) 136.00419465 • Fax: (86) 755.83275012

**AFRICA** Roodepoort • South Africa - Office & Mobile: +27 82 553 9093 • Fax: 086 670 6318

**AUSTRALIA** Glen Osmond 5064 • South Australia • Tel: +61 (0) 417 862 269 • Fax +61 (0) 8 8338 2021

**MEXICO, CENTRAL AMERICA** Guanajuato • Mexico • Tel/Fax: +52 (461) 614.2322

**SOUTH AMERICA** Santiago • Chile • Tel/Fax: +56 229.556220