

SPRAYS - RES/COM SPECIFICATION

STANDARD

63XA-02

2½" (6,3 cm) Pop-Up Body

63XA-04

4" (10,2 cm) Pop-Up Body

63XA-06

6" (15,2 cm) Pop-Up Body

63XA-12

12" (30,5 cm) Pop-Up Body

Pre-Installed MAN

2½" (6,3 cm) Pop-up

Factory Installed MAN Nozzle

63XA-0212

63XA-0215

63XA-0217

4" (10,2 cm) Pop-up

Factory Installed MAN Nozzle

63XA-0412

63XA-0415

63XA-0417

6" (15,2 cm) Pop-up

Factory Installed MAN Nozzle

63XA-0612

63XA-0615

63XA-0617

WITH ADV

63XB-02

2½" (6,3 cm) Pop-up

63XB-04

4" (10,2 cm) Pop-up

63XB-06

6" (15,2 cm) Pop-up

63XB-12

12" (30,5 cm) Pop-up

WITH iStop™

63XC-02

2½" (6,3 cm) Pop-up

63XC-04

4" (10,2 cm) Pop-up

63XC-06

6" (15,2 cm) Pop-up

63XC-12

12" (30,5 cm) Pop-up



SPECIFICATIONS

OPERATING RANGE:

15-60 psi (1-4,1 bar)

20-60 psi (1,3-4,1 bar) ADV models

OPTIMUM PRESSURE:

30 psi (2 bar)

MAXIMUM PRESSURE:

60 psi (4,1 bar)

SEALING PRESSURE:

10 psi (0,7 bar)

20 psi (1,3 bar) ADV models

POP-UP HEIGHT:

2½" (6,3 cm) (63X-02)

4" (10,2 cm) (63X-04)

6" (15,2 cm) (63X-06)

12" (30,5 cm) (63X-12)

BODY HEIGHT:

3½" (8,9 cm) (63X-02)

37/8" (9,8 cm) (63X-04)

57/8" (15 cm) (63X-06)

15" (38,1 cm) (63X-12)

SHRUB MODEL AVAILABLE

FLUSH RATE:

0.2 gpm (0,75 l/min)

INLET SIZE:

½" (12,7 mm) NPT Female thread

CHECK HEIGHT:

10 ft (3 m) elevation change

SCREEN MESH:

.045 sq. in. (1,14 mm2) / 1150 micron

EFFLUENT CAP AVAILABLE

PER BOX:

50

63X-02 Series, 63X-04 Series, 63X-06 Series

25

63X-12 Series

WITH iStop™ and PR

63XD-02

2½" (6,3 cm) Pop-up

63XD-04

4" (10,2 cm) Pop-up

63XD-06

6" (15,2 cm) Pop-up

WITH iStop™, PR and ADV

63XE-02

2½" (6,3 cm) Pop-up

63XE-04

4" (10,2 cm) Pop-up

63XE-06

6" (15,2 cm) Pop-up

iStop™ 63XR RETROFIT KITS

63XR-02

2½" (6,3 cm)
Retrofit iStop™ Kit

63XR-04

4" (10,2 cm)
Retrofit iStop™ Kit

63XR-06

6" (15,2 cm)
Retrofit iStop™ Kit

63XR-12

12" (30,5 cm)
Retrofit iStop™ Kit

Accessories

6318

Piston Extension

6319

Anti-drain valve (ADV)

6390RWC

Identifies reclaimed water site

6300

Shrub Adapter

7300

Adjustable Bubbler

8819

Brass automatic drain valve

63XR



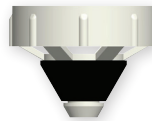
6390RWC



7300



6319



6300



6318



8819



ACCESSORY FEATURES

iStop™ 63XR RETROFIT KIT

- Shuts off if the nozzle is removed
- Shuts off if the riser is broken at any point above the top level of the cap
- Retrofit any existing 6300 sprayhead with new iStop™

6318 (Not Shown)

- Adds 6" (15, 24 cm) to any series pop-up
- Perfect for landscape areas that need extra clearance
- It threads directly onto the top of the piston and accepts all Signature® spray nozzles

6319

- Anti-drain valve (ADV) helps eliminate low head drainage and puddling. Holds back up to 10 ft (3 m) difference in elevation.

6300

- Adapt from ½" (12,7mm) NPT to a standard female thread spray nozzle

7300

- Provides an umbrella pattern that can be adjusted with a stainless steel set screw
- Bubbler installs on standard ½" (12,7 mm) riser and has a maximum flow of 4.9 gpm (7,6 l/min) at 18" (45 cm) radius

8819

- Prevents underground line breakage due to freezing
- Solid brass body
- Automatically opens when line pressure drops below three psi
- ½" male threads
- 5 year warranty on materials and workmanship

Pressure			Model	Pressure		Radius ¹		Discharge ¹	
PSI	FT	GPM		BAR	kPa	m	L/min	m³/hr	
20	0.8	2.9	7300 FULL (360°)	1.4	138	0.2	11.0	0.66	
30	0.9	3.5		2.1	207	0.3	13.2	0.79	
40	1.1	4.1		2.8	276	0.3	15.5	0.93	
50	1.2	4.5		3.5	345	0.4	17.0	1.02	
60	1.2	4.9		4.2	414	0.4	18.5	1.11	

¹ Radius and flow can be reduced with adjustment screw.

SIGNATURE CONTROL SYSTEMS, INC.

WORLD HEADQUARTERS

18 Goodyear • Suite 110
Irvine • California • 92618
Tel: 949.580.3640
Fax: 949.580.3645

USA Toll Free: 866.4SIGNATURE

MANUFACTURING FACILITY

8800 N.Allen Rd.,
Peoria • Illinois • 61615
Tel: 949.580.3640
Fax: 949.580.3645

EUROPE & MIDDLE EAST

5 rue de la Vallée Yart
78640 Saint Germain de la Grange
France
Tel: +33.13.489.9056
Fax: +33.13.489.6025

REGIONAL OFFICES

ASIA
NanXian Plaza • MinZhi Street • Shenzhen,
Guangdong Province • 518131
Tel: (86) 136.00419465 • Fax: (86) 755.83275012
SOUTH AMERICA
Av Paseo Los Bravos 6000 • Lo Barnechea
Santiago • Chile
Tel/Fax: +56 229.556220

MEXICO, CENTRAL AMERICA

Ribera Escondida 118 • Riberas Del Campestre
38080 Celaya • Gto. • Mexico
Tel/Fax: +52 (461) 614.2322
AFRICA
P.O. Box 1260 • Strubensvalley 1735
Rooodepoort • South Africa
Office & Mobile: +27 82 553 9093 • Fax: 086 670 6318